

BMP-10 Antibody
Rabbit Polyclonal Antibody
Catalog # ABV11011**Specification**

BMP-10 Antibody - Product Information

Application	WB
Primary Accession	O95393
Reactivity	Human
Host	Rabbit
Clonality	Polyclonal
Isotype	Rabbit IgG
Calculated MW	48047

BMP-10 Antibody - Additional Information**Gene ID** 27302

Application & Usage	Western blot analysis (0.5-4 µg/ml). However, the optimal conditions should be determined individually. Recombinant human BMP-10 can be used as positive control.
---------------------	--

Other Names

Bone Morphogenetic Protein 10, Bone Morphogenetic Protein-10

Target/Specificity

BMP-10

Antibody Form

Liquid

Appearance

Colorless liquid

Formulation

100 µg (0.5 mg/ml) affinity purified rabbit anti-human BMP-10 polyclonal antibody in phosphate buffered saline (PBS), pH 7.2, containing 30% glycerol, 0.5% BSA and 0.01% thimerosal.

Handling

The antibody solution should be gently mixed before use.

Reconstitution & Storage

-20 °C

Background Descriptions**Precautions**

BMP-10 Antibody is for research use only and not for use in diagnostic or therapeutic procedures.

BMP-10 Antibody - Protein Information

Name BMP10

Function

Required for maintaining the proliferative activity of embryonic cardiomyocytes by preventing premature activation of the negative cell cycle regulator CDKN1C/p57KIP and maintaining the required expression levels of cardiogenic factors such as MEF2C and NKX2-5. Acts as a ligand for ACVRL1/ALK1, BMPR1A/ALK3 and BMPR1B/ALK6, leading to activation of SMAD1, SMAD5 and SMAD8 transcription factors. Inhibits endothelial cell migration and growth. May reduce cell migration and cell matrix adhesion in breast cancer cell lines.

Cellular Location

Secreted.

Tissue Location

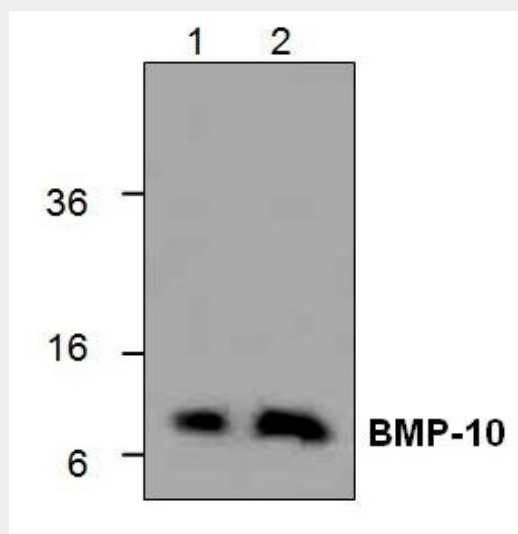
Detected in mammary epithelia (at protein level).

BMP-10 Antibody - Protocols

Provided below are standard protocols that you may find useful for product applications.

- [Western Blot](#)
- [Blocking Peptides](#)
- [Dot Blot](#)
- [Immunohistochemistry](#)
- [Immunofluorescence](#)
- [Immunoprecipitation](#)
- [Flow Cytometry](#)
- [Cell Culture](#)

BMP-10 Antibody - Images



Western blot analysis of BMP-10 using recombinant human BMP-10. Lane 1: 50 ng; Lane 2: 100 ng

BMP-10 Antibody - Background

BMPs (bone morphogenetic proteins) belong to the TGF- β superfamily of structurally related signaling proteins. As implied by their name, BMPs promote and regulate bone development, growth, remodeling and repair, in both prenatal development and postnatal growth of eye, heart, kidney, skin, and other tissues. BMP-10 is essential for the proper development of the heart, but is not expressed until after cardiac patterning or looping is completed.