

**IGF-BP1 Antibody**  
**Rabbit Polyclonal Antibody**  
**Catalog # ABV11053****Specification**

---

**IGF-BP1 Antibody - Product Information**

Application	<b>WB</b>
Reactivity	<b>Human</b>
Host	<b>Rabbit</b>
Clonality	<b>Polyclonal</b>
Isotype	<b>Rabbit IgG</b>

**IGF-BP1 Antibody - Additional Information**

Positive Control	<b>Recombinant human IGF-BP1</b>
Application & Usage	<b>Western blotting (0.5-4 µg/ml). However, the optimal conditions should be determined individually. Recombinant human IGFBP-1 can be used as a positive control. Other applications have not been determined.</b>

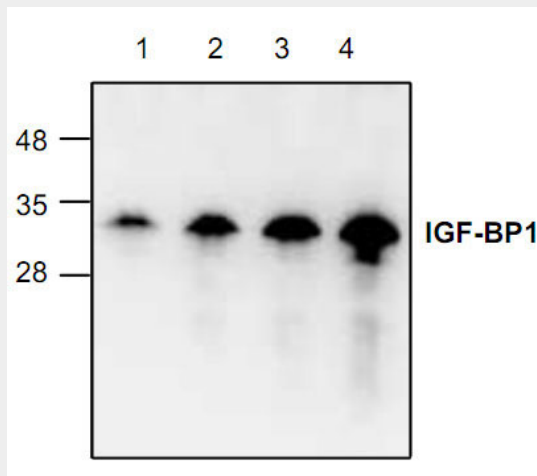
**Target/Specificity**  
IGF-BP1**Antibody Form**  
Liquid**Appearance**  
Colorless liquid**Formulation**  
100 µg (0.5 mg/ml) affinity purified rabbit anti-human IGF-BP1 polyclonal antibody in phosphate buffered saline (PBS), pH 7.2, containing 30% glycerol and 0.01% thimerosal.**Handling**  
The antibody solution should be gently mixed before use.**Reconstitution & Storage**  
-20 °C**Background Descriptions****Precautions**  
IGF-BP1 Antibody is for research use only and not for use in diagnostic or therapeutic procedures.**IGF-BP1 Antibody - Protein Information**

## IGF-BP1 Antibody - Protocols

Provided below are standard protocols that you may find useful for product applications.

- [Western Blot](#)
- [Blocking Peptides](#)
- [Dot Blot](#)
- [Immunohistochemistry](#)
- [Immunofluorescence](#)
- [Immunoprecipitation](#)
- [Flow Cytometry](#)
- [Cell Culture](#)

## IGF-BP1 Antibody - Images



Western blot analysis using recombinant human IGF-BP1. Lane 1: 20 ng; Lane 2: 50 ng; Lane 3: 100 ng; Lane 4: 200 ng

## IGF-BP1 Antibody - Background

Human IGF-BP1 is a cysteine-rich secreted protein expressed in liver, decidual, and kidneys and is the most abundant IGF-BP in amniotic fluid. Levels of IGF-BP1 in serum are lowest after food. IGF-BP1 binds both IGF-I and IGF-II with equal affinity. Phosphorylated IGF-BP1 hinders IGF actions, whereas nonphosphorylated IGF-BP1 is stimulatory.