

**GDF-3 Antibody**  
**Rabbit Polyclonal Antibody**  
**Catalog # ABV11061****Specification**

---

**GDF-3 Antibody - Product Information**

Application	WB
Primary Accession	<a href="#">Q9NR23</a>
Other Accession	<a href="#">AAM27000</a>
Reactivity	Human
Host	Rabbit
Clonality	Polyclonal
Isotype	Rabbit IgG
Calculated MW	41387

**GDF-3 Antibody - Additional Information****Gene ID 9573****Application & Usage****Western blot analysis (0.5-4 µg/ml). Other applications have not been determined.****Other Names**

GDF3, GDF 3, GDF-3, Growth differentiation factor 3, VG-1-related protein 2, Vgr2, Vgr 2

**Target/Specificity**

GDF-3

**Antibody Form**

Liquid

**Appearance**

Colorless liquid

**Formulation**

100 µg (0.5 mg/ml) affinity purified rabbit anti-human GDF-3 polyclonal antibody in phosphate buffered saline (PBS), pH 7.2, containing 30% glycerol , 0.5 mg/ml BSA, and 0.01% thimerosal.

**Handling**

The antibody solution should be gently mixed before use.

**Reconstitution & Storage**

-20 °C

**Background Descriptions****Precautions**

GDF-3 Antibody is for research use only and not for use in diagnostic or therapeutic procedures.

## GDF-3 Antibody - Protein Information

**Name** GDF3

### Function

Growth factor involved in early embryonic development and adipose-tissue homeostasis. During embryogenesis controls formation of anterior visceral endoderm and mesoderm and the establishment of anterior-posterior identity through a receptor complex comprising the receptor ACVR1B and the coreceptor CRIPTO (By similarity). Regulates adipose-tissue homeostasis and energy balance under nutrient overload in part by signaling through the receptor complex based on ACVR1C and CRIPTO/Cripto (PubMed:<a href="http://www.uniprot.org/citations/21805089" target="\_blank">21805089</a>).

### Cellular Location

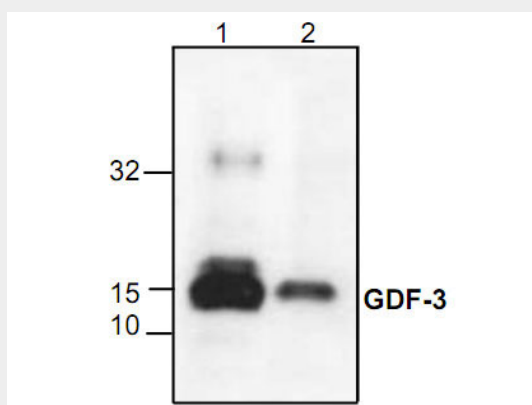
Secreted. Cytoplasm. Note=Mainly accumulated in the cytoplasm

## GDF-3 Antibody - Protocols

Provided below are standard protocols that you may find useful for product applications.

- [Western Blot](#)
- [Blocking Peptides](#)
- [Dot Blot](#)
- [Immunohistochemistry](#)
- [Immunofluorescence](#)
- [Immunoprecipitation](#)
- [Flow Cytometry](#)
- [Cell Culture](#)

## GDF-3 Antibody - Images



Western blot analysis using recombinant human GDF-3. Lane 1: 1µg; Lane 2: 250 ng

## GDF-3 Antibody - Background

GDF-3 is a member of the TGF- $\beta$  superfamily of growth and differentiation factors, and is highly homologous to GDF-9. Unlike most TGF- $\beta$  family members, GDF-3 and GDF-9 are not disulfide-linked dimers. GDF-3 is expressed in adult bone marrow, spleen, thymus, and adipose tissue. The expression of GDF-3 is upregulated in high-fat-fed wild-type FABP4/aP2 null mice and was associated with obesity, but not with the related hyperglycemia/hyperinsulinemia which characterizes Type-2 diabetes. Anti-human GDF-3 polyclonal antibody contains 114 amino acids.