

Adiponectin Antibody
Rabbit Polyclonal Antibody
Catalog # ABV11079**Specification**

Adiponectin Antibody - Product Information

Application	WB
Primary Accession	Q15848
Other Accession	D45371
Reactivity	Human, Mouse, Rat
Host	Rabbit
Clonality	Polyclonal
Isotype	Rabbit IgG
Calculated MW	26414

Adiponectin Antibody - Additional Information**Gene ID** 9370

Application & Usage	Western blotting (0.5-2 µg/ml) and Immunoprecipitation (10-20 µg/ml). However, the optimal conditions should be determined individually. Recombinant human adiponectin of adiponectins in samples from human, mouse, and rat origins.
---------------------	---

Other Names

ACDC, ACRP30 , Acrp30, AdipoQ

Target/Specificity

Adiponectin

Antibody Form

Liquid

Appearance

Colorless liquid

Formulation

0.5 mg/ml antigen affinity purified rabbit anti-adiponectin polyclonal antibody in phosphate buffered saline (PBS), pH 7.2, containing 30% glycerol, 0.5% BSA, 0.01% thimerosal.

Handling

The antibody solution should be gently mixed before use.

Reconstitution & Storage

-20 °C

Background Descriptions

Precautions

Adiponectin Antibody is for research use only and not for use in diagnostic or therapeutic procedures.

Adiponectin Antibody - Protein Information

Name ADIPOQ

Function

Important adipokine involved in the control of fat metabolism and insulin sensitivity, with direct anti-diabetic, anti-atherogenic and anti-inflammatory activities. Stimulates AMPK phosphorylation and activation in the liver and the skeletal muscle, enhancing glucose utilization and fatty-acid combustion. Antagonizes TNF-alpha by negatively regulating its expression in various tissues such as liver and macrophages, and also by counteracting its effects. Inhibits endothelial NF-kappa-B signaling through a cAMP-dependent pathway. May play a role in cell growth, angiogenesis and tissue remodeling by binding and sequestering various growth factors with distinct binding affinities, depending on the type of complex, LMW, MMW or HMW.

Cellular Location

Secreted.

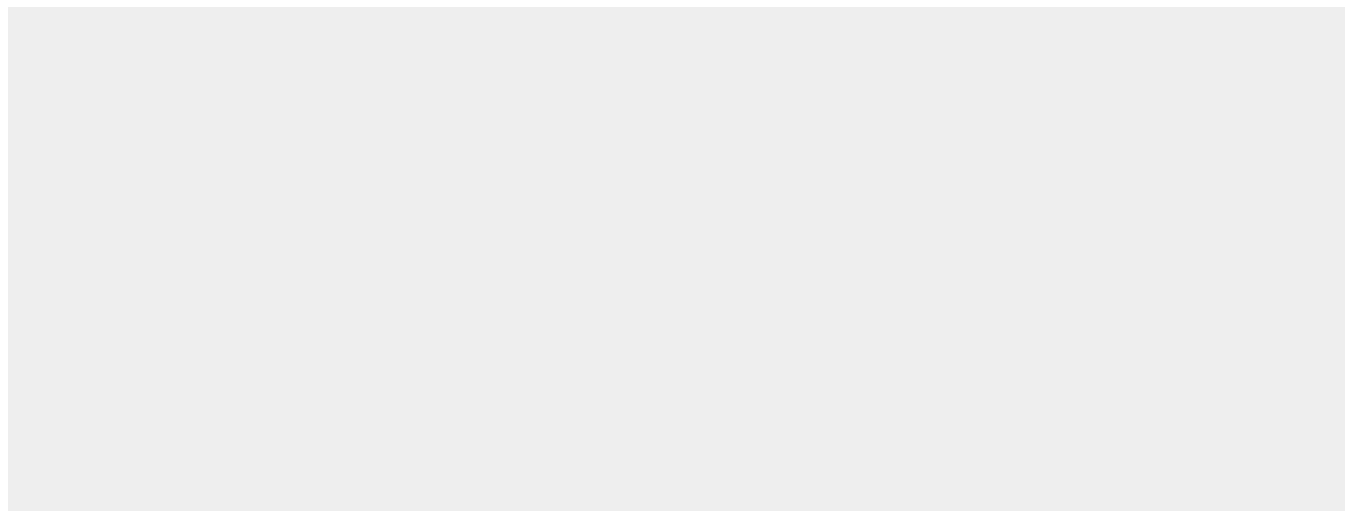
Tissue Location

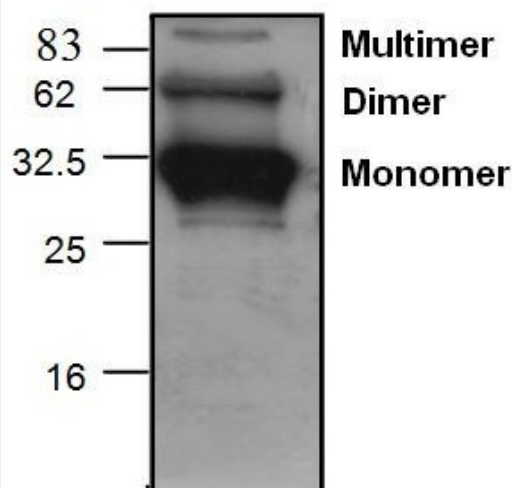
Synthesized exclusively by adipocytes and secreted into plasma.

Adiponectin Antibody - Protocols

Provided below are standard protocols that you may find useful for product applications.

- [Western Blot](#)
- [Blocking Peptides](#)
- [Dot Blot](#)
- [Immunohistochemistry](#)
- [Immunofluorescence](#)
- [Immunoprecipitation](#)
- [Flow Cytometry](#)
- [Cell Culture](#)

Adiponectin Antibody - Images



Western blot analysis of recombinant human adiponectin. The antibody detects monomer, dimer and multimers of adiponectin proteins.

Adiponectin Antibody - Background

Adipocytes are highly active cells with potent autocrine, paracrine, and endocrine functions. Adiponectin is a serum protein produced and secreted exclusively by adipose tissues. Unlike insulin and leptin, adiponectin levels in plasma remain constant throughout the day and are not acutely affected by food intake.