

**Adiponectin Antibody**  
**Rabbit Polyclonal Antibody**  
**Catalog # ABV11081****Specification**

---

**Adiponectin Antibody - Product Information**

Application	WB
Primary Accession	<a href="#">Q60994</a>
Reactivity	Mouse
Host	Rabbit
Clonality	Polyclonal
Isotype	Rabbit IgG
Calculated MW	26809

**Adiponectin Antibody - Additional Information****Gene ID** 11450**Application & Usage**

**Western blotting (0.5-2 µg/ml) and Immunoprecipitation (10-20 µg/ml). However, the optimal conditions should be determined individually. Recombinant human adiponectin of adiponectins in samples from human, mouse, and rat origins.**

**Other Names**

ACDC, ACRP30 , Acrp30, AdipoQ

**Target/Specificity**

Adiponectin

**Antibody Form**

Liquid

**Appearance**

Colorless liquid

**Formulation**

0.5 mg/ml protein A affinity purified rabbit anti-adiponectin polyclonal antibody in phosphate buffered saline (PBS), pH 7.2, containing 30% glycerol, 0.5% BSA, 0.01% thimerosal.

**Handling**

The antibody solution should be gently mixed before use.

**Reconstitution & Storage**

-20 °C

**Background Descriptions**

**Precautions**

Adiponectin Antibody is for research use only and not for use in diagnostic or therapeutic procedures.

**Adiponectin Antibody - Protein Information**

**Name** Adipoq

**Synonyms** Acdc, Acrp30, Apm1

**Function**

Important adipokine involved in the control of fat metabolism and insulin sensitivity, with direct anti-diabetic, anti-atherogenic and anti-inflammatory activities. Stimulates AMPK phosphorylation and activation in the liver and the skeletal muscle, enhancing glucose utilization and fatty-acid combustion. Antagonizes TNF-alpha by negatively regulating its expression in various tissues such as liver and macrophages, and also by counteracting its effects. Inhibits endothelial NF-kappa-B signaling through a cAMP-dependent pathway. May play a role in cell growth, angiogenesis and tissue remodeling by binding and sequestering various growth factors with distinct binding affinities, depending on the type of complex, LMW, MMW or HMW.

**Cellular Location**

Secreted.

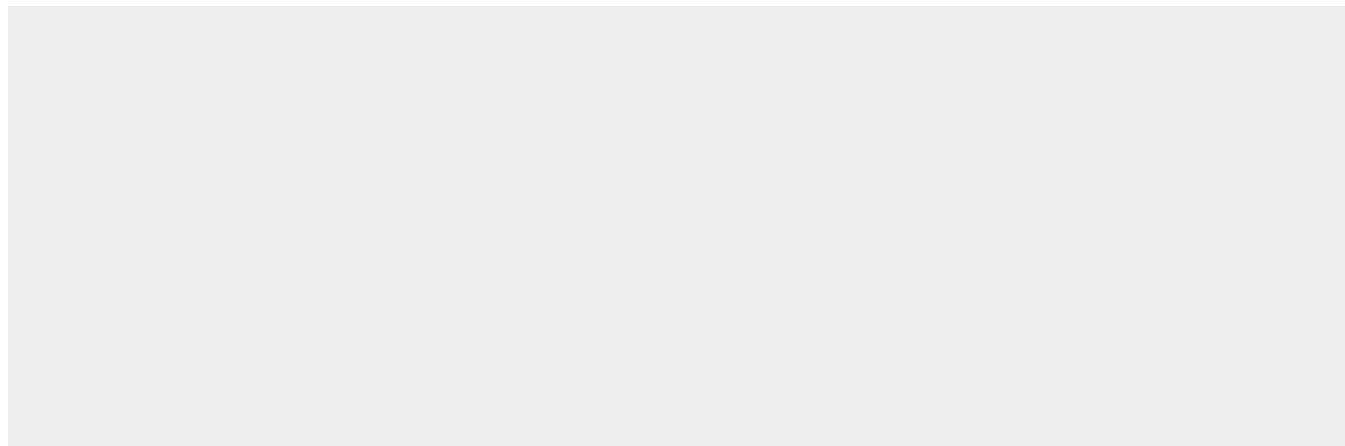
**Tissue Location**

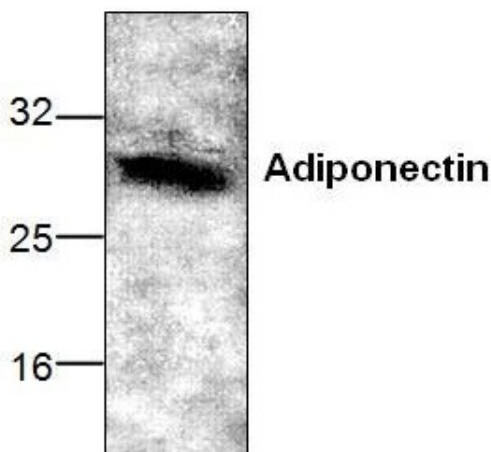
Synthesized exclusively by adipocytes and secreted into plasma

**Adiponectin Antibody - Protocols**

Provided below are standard protocols that you may find useful for product applications.

- [Western Blot](#)
- [Blocking Peptides](#)
- [Dot Blot](#)
- [Immunohistochemistry](#)
- [Immunofluorescence](#)
- [Immunoprecipitation](#)
- [Flow Cytometry](#)
- [Cell Culture](#)

**Adiponectin Antibody - Images**



Western blot analysis with recombinant human adiponectin.

#### **Adiponectin Antibody - Background**

Adipocytes are highly active cells with potent autocrine, paracrine, and endocrine functions. Adiponectin is a serum protein produced and secreted exclusively by adipose tissues. Unlike insulin and leptin, adiponectin levels in plasma remain constant throughout the day and are not acutely affected by food intake.