

EDEM2 Antibody
Rabbit Polyclonal Antibody
Catalog # ABV11189**Specification**

EDEM2 Antibody - Product Information

Application	WB
Primary Accession	Q9BV94
Reactivity	Human, Mouse, Rat
Host	Rabbit
Clonality	Polyclonal
Isotype	Rabbit IgG
Calculated MW	64753

EDEM2 Antibody - Additional Information**Gene ID** 55741

Positive Control	Western Blot: Rat kidney lysate
Application & Usage	Western blot: 1:200
Other Names	
ER degradation-enhancing alpha-mannosidase-like protein 2	

Target/Specificity
EDEM2**Antibody Form**
Liquid**Appearance**
Colorless liquid**Formulation**
100 µg (0.5 mg/ml) polyclonal antibody in phosphate buffered saline (PBS), pH 7.2, containing 30% glycerol, 0.5% BSA, 0.01% thimerosal.**Handling**
The antibody solution should be gently mixed before use.**Reconstitution & Storage**
-20 °C**Background Descriptions****Precautions**
EDEM2 Antibody is for research use only and not for use in diagnostic or therapeutic procedures.**EDEM2 Antibody - Protein Information**

Name EDEM2**Synonyms** C20orf31, C20orf49**Function**

Involved in the endoplasmic reticulum-associated degradation (ERAD) pathway that targets misfolded glycoproteins for degradation in an N-glycan-dependent manner (PubMed:15537790, PubMed:25092655). May initiate ERAD by promoting the first mannose trimming step of ERAD substrates, from Man9GlcNAc2 to Man8GlcNAc2 (PubMed:25092655). Seems to recognize and bind to exposed hydrophobic regions in target proteins (By similarity).

Cellular Location

Endoplasmic reticulum lumen

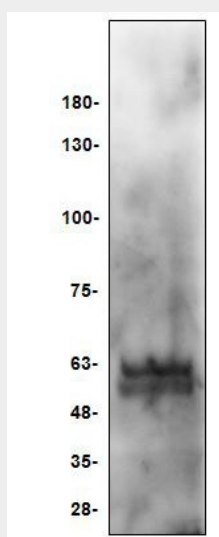
Tissue Location

Expressed ubiquitously in all tissues tested with slightly higher levels detected in small intestine and peripheral blood leukocytes and weakest levels in brain and skeletal muscle

EDEM2 Antibody - Protocols

Provided below are standard protocols that you may find useful for product applications.

- [Western Blot](#)
- [Blocking Peptides](#)
- [Dot Blot](#)
- [Immunohistochemistry](#)
- [Immunofluorescence](#)
- [Immunoprecipitation](#)
- [Flow Cytometry](#)
- [Cell Culture](#)

EDEM2 Antibody - Images

Western blot of Rat kidney lysate with EDEM2 antibody.

EDEM2 Antibody - Background

Proteins expressed in the endoplasmic reticulum (ER) are tightly regulated by a variety of quality control mechanisms. Terminally misfolded proteins in the ER are retrotranslocated to the cytoplasm and degraded by proteasomes through a mechanism known as ER-associated degradation (ERAD). EDEM2 (ER degradation-enhancing alpha-mannosidase-like 2) is a 578 amino acid secreted protein that, in conjunction with other EDEM proteins (namely EDEM and EDEM3), is involved in the ERAD pathway of protein degradation. EDEM2, a member of the glycosyl hydrolase 47 family, contains a mannosidase homology domain, an N-terminal cleavable signal sequence and a C-terminal extension that is required for both ER retention and the proper function of EDEM2. Human EDEM2 shares 93% sequence identity with its mouse homolog, suggesting a conserved role between species. Two isoforms of EDEM2 exist due to alternative splicing events.