

IL-1RA Antibody
Rabbit Polyclonal Antibody
Catalog # ABV11217**Specification**

IL-1RA Antibody - Product Information

Application	WB
Primary Accession	P18510
Reactivity	Human
Host	Rabbit
Clonality	Polyclonal
Isotype	Rabbit IgG
Calculated MW	20055

IL-1RA Antibody - Additional Information**Gene ID** 3557

Positive Control	Western Blot: Recombinant protein
Application & Usage	Western blot: 1-4 µg/ml.
Other Names	
IRAP, IL1F3, IL1RA, IL-1ra3, ICIL-1RA, IL1RN, IL1 inhibitor, IL-1ra, MGC10430, human IL-1RA, recombinant human IL-1RA	

Target/Specificity
IL-1RA**Antibody Form**
Liquid**Appearance**
Colorless liquid**Formulation**
100 µg (0.5 mg/ml) of antibody in PBS pH 7.2 containing 0.01 % BSA, 0.01 % thimerosal, and 50 % glycerol.**Handling**
The antibody solution should be gently mixed before use.**Reconstitution & Storage**
-20 °C**Background Descriptions****Precautions**
IL-1RA Antibody is for research use only and not for use in diagnostic or therapeutic procedures.

IL-1RA Antibody - Protein Information

Name IL1RN

Synonyms IL1F3, IL1RA

Function

Anti-inflammatory antagonist of interleukin-1 family of proinflammatory cytokines such as interleukin-1beta/IL1B and interleukin-1alpha/IL1A. Protects from immune dysregulation and uncontrolled systemic inflammation triggered by IL1 for a range of innate stimulatory agents such as pathogens.

Cellular Location

[Isoform 1]: Secreted [Isoform 3]: Cytoplasm.

Tissue Location

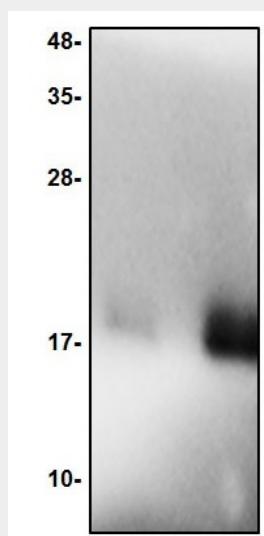
The intracellular form of IL1RN is predominantly expressed in epithelial cells

IL-1RA Antibody - Protocols

Provided below are standard protocols that you may find useful for product applications.

- [Western Blot](#)
- [Blocking Peptides](#)
- [Dot Blot](#)
- [Immunohistochemistry](#)
- [Immunofluorescence](#)
- [Immunoprecipitation](#)
- [Flow Cytometry](#)
- [Cell Culture](#)

IL-1RA Antibody - Images



Western blot of IL-1RA antibody. Lane 1: Recombinant human IL-1RA protein - 2 ng. Lane 2: Recombinant human IL-1RA protein - 10 ng

IL-1RA Antibody - Background

Interleukin-1 RA is a member of the interleukin 1 cytokine family. This protein inhibits the activities of interleukin 1-alpha (IL1A) and interleukin 1-beta (IL1B), and modulates a variety of interleukin 1 related immune and inflammatory responses. This gene and five other closely related cytokine genes form a gene cluster spanning approximately 400 kb on chromosome 2. A polymorphism of this gene is reported to be associated with increased risk of osteoporotic fractures and gastric cancer. Four alternatively spliced transcript variants encoding distinct isoforms have been reported. IL1RA Human Recombinant produced in E.Coli is a non-glycosylated, N-terminal methionyl form of the human naturally-occurring polypeptide chain containing 153 amino acids and having a molecular mass of 17000 Dalton.