

**Wnt-2 Antibody**  
**Rabbit Polyclonal Antibody**  
**Catalog # ABV11222****Specification**

---

**Wnt-2 Antibody - Product Information**

Application	WB
Primary Accession	<a href="#">P09544</a>
Reactivity	Human
Host	Rabbit
Clonality	Polyclonal
Isotype	Rabbit IgG
Calculated MW	40418

**Wnt-2 Antibody - Additional Information****Gene ID 7472**

Positive Control	Western Blot: Recombinant protein
Application & Usage	Western blot: 1-4 µg/ml.
<b>Other Names</b>	
INT1L1, IRP, Int-1-like protein 1, Int-1-related protein	

**Target/Specificity**

Wnt-2

**Antibody Form**

Liquid

**Appearance**

Colorless liquid

**Formulation**

100 µg (0.5 mg/ml) of antibody in PBS pH 7.2 containing 0.01 % BSA, 0.01 % thimerosal, and 50 % glycerol.

**Handling**

The antibody solution should be gently mixed before use.

**Reconstitution & Storage**

-20 °C

**Background Descriptions****Precautions**

Wnt-2 Antibody is for research use only and not for use in diagnostic or therapeutic procedures.

**Wnt-2 Antibody - Protein Information**

**Name** WNT2**Synonyms** INT1L1, IRP**Function**

Ligand for members of the frizzled family of seven transmembrane receptors. Functions in the canonical Wnt signaling pathway that results in activation of transcription factors of the TCF/LEF family (PubMed:<a href="http://www.uniprot.org/citations/20018874" target="\_blank">20018874</a>). Functions as a upstream regulator of FGF10 expression. Plays an important role in embryonic lung development. May contribute to embryonic brain development by regulating the proliferation of dopaminergic precursors and neurons (By similarity).

**Cellular Location**

Secreted, extracellular space, extracellular matrix. Secreted

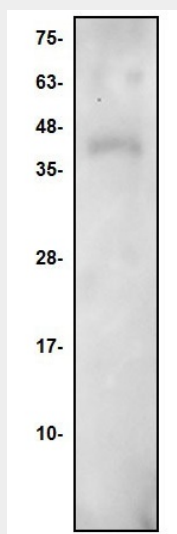
**Tissue Location**

Expressed in brain in the thalamus, in fetal and adult lung and in placenta.

**Wnt-2 Antibody - Protocols**

Provided below are standard protocols that you may find useful for product applications.

- [Western Blot](#)
- [Blocking Peptides](#)
- [Dot Blot](#)
- [Immunohistochemistry](#)
- [Immunofluorescence](#)
- [Immunoprecipitation](#)
- [Flow Cytometry](#)
- [Cell Culture](#)

**Wnt-2 Antibody - Images**

Western blot of Wnt-2 antibody. Lane 1: hr Wnt-2: 50 ng.

**Wnt-2 Antibody - Background**

This protein belongs to the Wnt family of proteins. The WNT gene family consists of structurally related genes that encode secreted signaling proteins involved in the Wnt signaling pathway. Wnt gene family members, including Wnt-1 through Wnt-10, play a key role in regulating cellular growth and differentiation. These proteins have been implicated in oncogenesis and in several developmental processes, including regulation of cell fate and patterning during embryogenesis. Wnt-2 is expressed in brain in the thalamus, in fetal and adult lung and in the placenta.