

CRP Antibody
Rabbit Polyclonal Antibody
Catalog # ABV11240**Specification**

CRP Antibody - Product Information

Application	WB
Primary Accession	P02741
Reactivity	Human, Mouse, Rat
Host	Rabbit
Clonality	Polyclonal
Isotype	Rabbit IgG
Calculated MW	25039

CRP Antibody - Additional Information**Gene ID** 1401

Positive Control	Western Blot: Jurkat cell lysate, mouse muscle lysate, rat kidney lysate, recombinant protein
Application & Usage	Western blot: 1-4 µg
Other Names	
C-Reactive Protein	

Target/Specificity
CRP**Antibody Form**
Liquid**Appearance**
Colorless liquid**Formulation**
100 µg (0.5 mg/ml) of antibody in PBS pH 7.2, 0.01 % BSA, 0.03 % ProClin®, and 50 % glycerol.**Handling**
The antibody solution should be gently mixed before use.**Reconstitution & Storage**
-20 °C**Background Descriptions****Precautions**
CRP Antibody is for research use only and not for use in diagnostic or therapeutic procedures.

CRP Antibody - Protein Information

Name CRP

Synonyms PTX1

Function

Displays several functions associated with host defense: it promotes agglutination, bacterial capsular swelling, phagocytosis and complement fixation through its calcium-dependent binding to phosphorylcholine. Can interact with DNA and histones and may scavenge nuclear material released from damaged circulating cells.

Cellular Location

Secreted.

Tissue Location

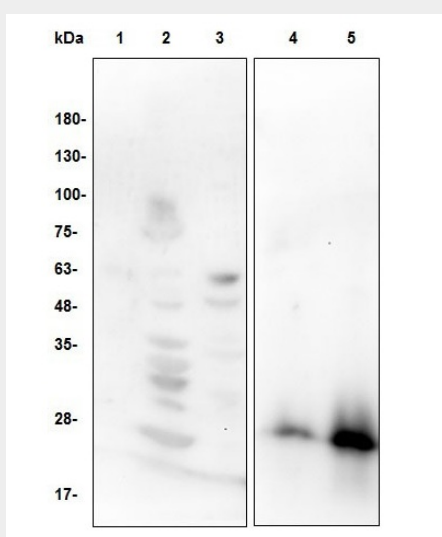
Found in plasma.

CRP Antibody - Protocols

Provided below are standard protocols that you may find useful for product applications.

- [Western Blot](#)
- [Blocking Peptides](#)
- [Dot Blot](#)
- [Immunohistochemistry](#)
- [Immunofluorescence](#)
- [Immunoprecipitation](#)
- [Flow Cytometry](#)
- [Cell Culture](#)

CRP Antibody - Images



Western blot with CRP antibody: Lane 1: 60 µg Jurkat cell lysate; Lane 2: 44 µg mouse muscle lysate; Lane 3: 60 µg rat kidney lysate; Lane 4: 2 ng Recombinant human CRP; Lane 5: 10 ng Recombinant human CRP

CRP Antibody - Background

C-Reactive protein (CRP) is an acute-phase protein that can have both pro-and anti-inflammatory effects. CRP is synthesized by the liver in response to factors released by fat cells or adipocytes. CRP is a member of the pentaxin family of proteins and in its native form is composed of five identical subunits, non-covalently linked to form a symmetrical disc of ~ 115 KDa. Widely used as a clinical marker of the state of inflammation. Increased CRP levels are found in inflammatory conditions including: bacterial infection, rheumatic fever, active arthritis, myocardial infarction, malignancies and in the post-operative state.