

Cyr61/CCN1 Antibody (Clone 466305)
Rat Monoclonal Antibody
Catalog # ABV11246**Specification**

Cyr61/CCN1 Antibody (Clone 466305) - Product Information

Application	IHC, WB
Primary Accession	P18406
Host	Rat
Clonality	Monoclonal
Isotype	Rat IgG2B
Calculated MW	41709

Cyr61/CCN1 Antibody (Clone 466305) - Additional Information**Gene ID** 16007

Positive Control	Western blot: mouse heart tissue, IHC: mouse trigeminal ganglia.
Application & Usage	WB: 2 µg/ml, IHC: 8-25 µg/ml.
Other Names	
CCN1, G1G1, IGFBP-10	

Target/Specificity
Cyr61/CCN1**Antibody Form**
Liquid**Appearance**
Lyophilized powder**Formulation**
Lyophilized from a 0.2 µm filtered solution in PBS with trehalose.**Handling**
The antibody solution should be gently mixed before use.**Reconstitution & Storage**
-20 °C**Background Descriptions****Precautions**
Cyr61/CCN1 Antibody (Clone 466305) is for research use only and not for use in diagnostic or therapeutic procedures.**Cyr61/CCN1 Antibody (Clone 466305) - Protein Information**

Name Ccn1 {ECO:0000312|MGI:MGI:88613}

Function

Promotes cell proliferation, chemotaxis, angiogenesis and cell adhesion. Appears to play a role in wound healing by up- regulating, in skin fibroblasts, the expression of a number of genes involved in angiogenesis, inflammation and matrix remodeling including VEGF-A, VEGF-C, MMP1, MMP3, TIMP1, uPA, PAI-1 and integrins alpha-3 and alpha-5 (By similarity). CCN1-mediated gene regulation is dependent on heparin-binding (By similarity). Down-regulates the expression of alpha-1 and alpha-2 subunits of collagen type-1 (By similarity). Promotes cell adhesion and adhesive signaling through integrin alpha- 6/beta-1, cell migration through integrin alpha-1/beta-5 and cell proliferation through integrin alpha-v/beta-3 (By similarity).

Cellular Location

Secreted.

Tissue Location

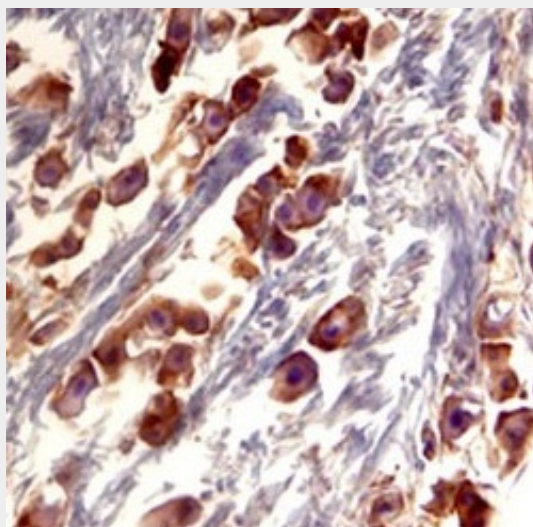
Low in kidney, adrenal gland, testes, brain, and ovary, moderate in heart, uterus, and skeletal muscle, highest in lung

Cyr61/CCN1 Antibody (Clone 466305) - Protocols

Provided below are standard protocols that you may find useful for product applications.

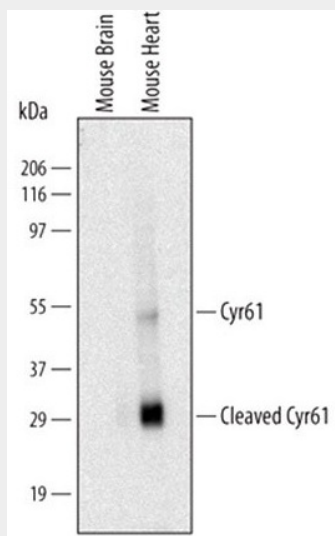
- [Western Blot](#)
- [Blocking Peptides](#)
- [Dot Blot](#)
- [Immunohistochemistry](#)
- [Immunofluorescence](#)
- [Immunoprecipitation](#)
- [Flow Cytometry](#)
- [Cell Culture](#)

Cyr61/CCN1 Antibody (Clone 466305) - Images



Cyr61/CCN1 in Mouse Trigeminal Ganglia. Cyr61/CCN1 was detected in perfusion fixed frozen sections of mouse trigeminal ganglia using 25 µg/mL Cyr61/CCN1 Antibody O/N at 4 °C. Tissue

was stained with the Anti-Rat HRP-DAB Cell & Tissue Staining Kit and counterstained with hematoxylin (blue).



Detection of Mouse Cyr61 by Western Blot. Western blot shows lysates of mouse brain tissue (negative control) and mouse heart tissue. PVDF membrane was probed with 2 μ g/mL of Cyr61/CCN1 Antibody followed by HRP-conjugated Anti-Rat IgG Secondary Antibody. Specific bands were detected for Cyr61 (at approximately 50 kDa) and cleaved Cyr61 (at approximately 25 kDa).

Cyr61/CCN1 Antibody (Clone 466305) - Background

Cyr61 is a member of angiogenic and vasculogenic regulators designated CCN proteins, which includes CTGF, Cyr61 homolog, Fisp2. Cyr61 functions as an angiogenic inducer, stimulating cell adhesion and migration and promotes DNA synthesis of human vascular endothelial cells. Elevated expression of Cyr61 is observed during vessel growth, wound healing and chondrocyte differentiation.