

ApoC2 Antibody (Center)
Rabbit Polyclonal Antibody
Catalog # ABV11268**Specification**

ApoC2 Antibody (Center) - Product Information

| | |
|-------------------|------------------------|
| Application | WB, IHC |
| Primary Accession | P02655 |
| Reactivity | Human |
| Host | Rabbit |
| Clonality | Polyclonal |
| Isotype | Rabbit IgG |

ApoC2 Antibody (Center) - Additional Information**Gene ID** 344

| | |
|---|---|
| Positive Control | Western blot: HL60 and A549 cell line lysates , IHC: human liver tissue |
| Application & Usage | Western blot: ~1:1000, IHC: ~1:10-1:50. |
| Other Names | |
| APOC2; APC2; Apolipoprotein C-II; Apolipoprotein C2 | |

Target/Specificity

ApoC2

Antibody Form

Liquid

Appearance

Colorless liquid

Formulation

100 µl of antibody in PBS with 0.09% (W/V) sodium azide

Handling

The antibody solution should be gently mixed before use.

Reconstitution & Storage

-20 °C

Background Descriptions**Precautions**

ApoC2 Antibody (Center) is for research use only and not for use in diagnostic or therapeutic procedures.

ApoC2 Antibody (Center) - Protein Information

Name APOC2

Synonyms APC2

Function

Component of chylomicrons, very low-density lipoproteins (VLDL), low-density lipoproteins (LDL), and high-density lipoproteins (HDL) in plasma. Plays an important role in lipoprotein metabolism as an activator of lipoprotein lipase. Both proapolipoprotein C-II and apolipoprotein C-II can activate lipoprotein lipase. In normolipidemic individuals, it is mainly distributed in the HDL, whereas in hypertriglyceridemic individuals, predominantly found in the VLDL and LDL.

Cellular Location

Secreted.

Tissue Location

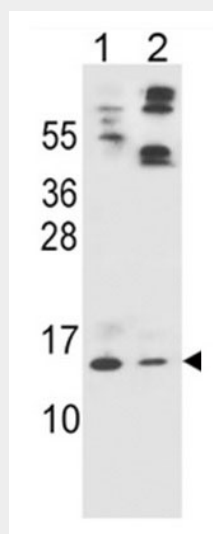
Liver and intestine..

ApoC2 Antibody (Center) - Protocols

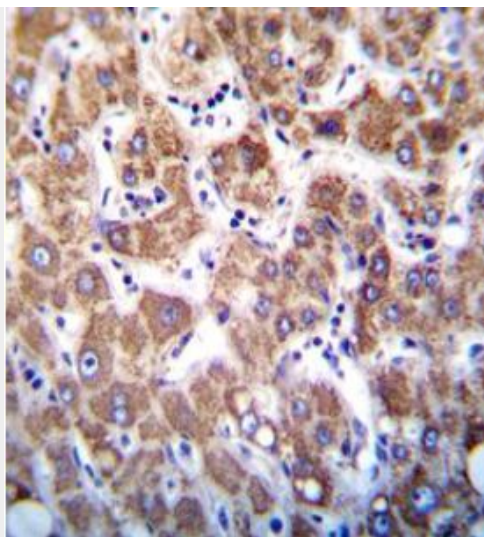
Provided below are standard protocols that you may find useful for product applications.

- [Western Blot](#)
- [Blocking Peptides](#)
- [Dot Blot](#)
- [Immunohistochemistry](#)
- [Immunofluorescence](#)
- [Immunoprecipitation](#)
- [Flow Cytometry](#)
- [Cell Culture](#)

ApoC2 Antibody (Center) - Images



Western blot analysis of APOC2 Antibody (N-term) in HL60 and A549 cell line lysates (35 µg/lane). APOC2 (arrow) was detected using the purified Pab.



Formalin-fixed and paraffin-embedded human liver tissue reacted with APOC2 antibody, which was peroxidase-conjugated to the secondary antibody, followed by DAB staining. This data demonstrates the use of this antibody for immunohistochemistry; clinical relevance has not been evaluated.

ApoC2 Antibody (Center) - Background

Apolipoproteins are plasma lipoproteins that function as transporters of lipids and cholesterol in the circulatory system. This gene encodes a lipid-binding protein belonging to the apolipoprotein gene family. The protein is secreted in plasma where it is a component of very low density lipoprotein. This protein activates the enzyme lipoprotein lipase, which hydrolyzes triglycerides and thus provides free fatty acids for cells. Mutations in this gene cause hyperlipoproteinemia type IB, characterized by hypertriglyceridemia, xanthomas, and increased risk of pancreatitis and early atherosclerosis. This gene is present in a cluster with other related apolipoprotein genes on chromosome 19. Naturally occurring read-through transcription exists between this gene and the neighboring upstream apolipoprotein C-IV (APOC4) gene.