

**ApoD Antibody (NT)**  
**Rabbit Polyclonal Antibody**  
**Catalog # ABV11269****Specification**

---

**ApoD Antibody (NT) - Product Information**

Application	WB
Primary Accession	<a href="#">P05090</a>
Reactivity	Human, Mouse
Host	Rabbit
Clonality	Polyclonal
Isotype	Rabbit IgG
Calculated MW	21276

**ApoD Antibody (NT) - Additional Information****Gene ID** 347

Positive Control	Western blot: 293 cell line lysate and mouse brain tissue lysate
Application & Usage	Western blot: ~1:1000.
<b>Other Names</b>	
APOD; Apolipoprotein D	

**Target/Specificity**  
ApoD**Antibody Form**  
Liquid**Appearance**  
Colorless liquid**Formulation**  
100 µl of antibody in PBS with 0.09% (W/V) sodium azide**Handling**  
The antibody solution should be gently mixed before use.**Reconstitution & Storage**  
-20 °C**Background Descriptions****Precautions**

ApoD Antibody (NT) is for research use only and not for use in diagnostic or therapeutic procedures.

## ApoD Antibody (NT) - Protein Information

**Name** APOD

### Function

APOD occurs in the macromolecular complex with lecithin- cholesterol acyltransferase. It is probably involved in the transport and binding of bilin. Appears to be able to transport a variety of ligands in a number of different contexts.

### Cellular Location

Secreted.

### Tissue Location

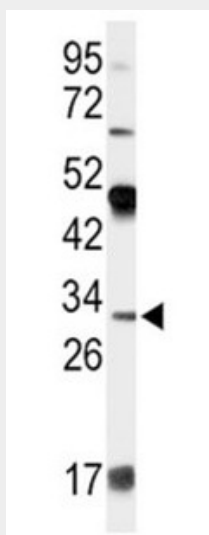
Expressed in liver, intestine, pancreas, kidney, placenta, adrenal, spleen, fetal brain tissue and tears

## ApoD Antibody (NT) - Protocols

Provided below are standard protocols that you may find useful for product applications.

- [Western Blot](#)
- [Blocking Peptides](#)
- [Dot Blot](#)
- [Immunohistochemistry](#)
- [Immunofluorescence](#)
- [Immunoprecipitation](#)
- [Flow Cytometry](#)
- [Cell Culture](#)

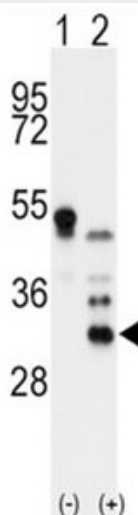
## ApoD Antibody (NT) - Images



Western blot analysis in 293 cell line lysates (35 µg/lane). APOD (arrow) was detected using the purified pAb.



Western blot analysis in mouse brain tissue lysates (35 µg/lane). APOD (arrow) was detected using the purified pAb.



Western blot analysis with 293 cell lysates (2 µg/lane) either nontransfected (Lane 1) or transiently transfected with the APOD gene (Lane 2)

#### **ApoD Antibody (NT) - Background**

Apolipoproteins are plasma lipoproteins that function as transporters of lipids and cholesterol in the circulatory system. Apolipoprotein-D (Apo-D) is mainly associated with high density lipoproteins in human plasma. It is expressed in numerous tissues having high levels of expression in spleen, testes and brain. Apo-D is a multi-ligand, multi-functional transporter and transports a ligand from 1 cell to another within an organ, scavenge a ligand within an organ for transport to the blood or could transport a ligand from the circulation to specific cells within a tissue.