

Aldolase A (ALDOA) Antibody (CT)
Rabbit Polyclonal Antibody
Catalog # ABV11304**Specification**

Aldolase A (ALDOA) Antibody (CT) - Product Information

Application	WB, IHC
Primary Accession	P04075
Reactivity	Human, Mouse, Rabbit
Host	Rabbit
Clonality	Polyclonal
Isotype	Rabbit IgG

Aldolase A (ALDOA) Antibody (CT) - Additional Information**Gene ID 226**

Positive Control	Western blot: mouse liver tissue lysates, IHC: human lung carcinoma.
Application & Usage	Western blot: ~1:1000, IHC: ~1:10-1:50.

Other Names

ALDOA; ALDA; Fructose-bisphosphate aldolase A; Lung cancer antigen NY-LU-1; Muscle-type aldolase.

Target/Specificity

ALDOA

Antibody Form

Liquid

Appearance

Colorless liquid

Formulation

100 µl of antibody in PBS with 0.09% (W/V) sodium azide

Handling

The antibody solution should be gently mixed before use.

Reconstitution & Storage

-20 °C

Background Descriptions**Precautions**

Aldolase A (ALDOA) Antibody (CT) is for research use only and not for use in diagnostic or therapeutic procedures.

Aldolase A (ALDOA) Antibody (CT) - Protein Information

Name ALDOA ([HGNC:414](#))

Synonyms ALDA

Function

Catalyzes the reversible conversion of beta-D-fructose 1,6- biphosphate (FBP) into two triose phosphate and plays a key role in glycolysis and gluconeogenesis (PubMed:14766013). In addition, may also function as scaffolding protein (By similarity).

Cellular Location

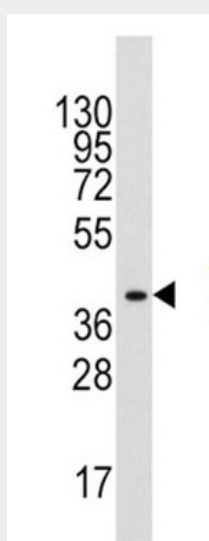
Cytoplasm, myofibril, sarcomere, I band {ECO:0000250|UniProtKB:P00883}. Cytoplasm, myofibril, sarcomere, M line {ECO:0000250|UniProtKB:P00883}. Note=In skeletal muscle, accumulates around the M line and within the I band, colocalizing with FBP2 on both sides of the Z line in the absence of Ca(2+) {ECO:0000250|UniProtKB:P00883}

Aldolase A (ALDOA) Antibody (CT) - Protocols

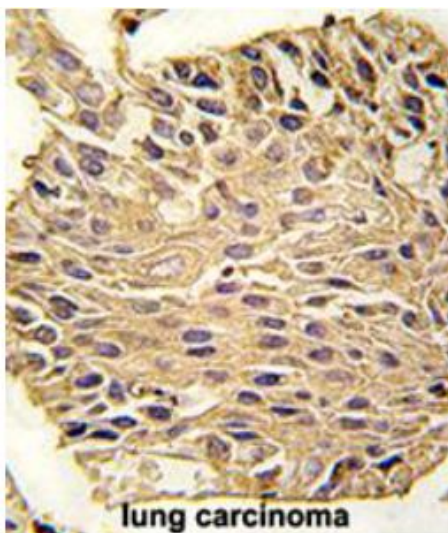
Provided below are standard protocols that you may find useful for product applications.

- [Western Blot](#)
- [Blocking Peptides](#)
- [Dot Blot](#)
- [Immunohistochemistry](#)
- [Immunofluorescence](#)
- [Immunoprecipitation](#)
- [Flow Cytometry](#)
- [Cell Culture](#)

Aldolase A (ALDOA) Antibody (CT) - Images



Western blot analysis of mouse liver tissue lysates (35 µg lysate).



Formalin-fixed and paraffin-embedded human lung carcinoma reacted with ALDOA antibody, which was peroxidase-conjugated to the secondary antibody, followed by DAB staining.

Aldolase A (ALDOA) Antibody (CT) - Background

Fructose biphosphate aldolase A, also known as Aldolase A is a glycolytic enzyme that catalyzes the reversible conversion of fructose-1,6-bisphosphate to glyceraldehyde 3-phosphate and dihydroxyacetone phosphate. It is found in the developing embryo and is produced in even greater amounts in adult muscle. Aldolase A expression is repressed in adult liver, kidney and intestine and similar to aldolase C levels in brain and other nervous tissue. Deficiency has been associated with myopathy and hemolytic anemia. Recombinant human Aldolase A, fused to His-tag at N-terminus, was expressed in E.coli and purified by using conventional chromatography techniques.