

**Aldolase C (ALDOC) Antibody (NT)**  
**Rabbit Polyclonal Antibody**  
**Catalog # ABV11307****Specification**

---

**Aldolase C (ALDOC) Antibody (NT) - Product Information**

Application	WB
Primary Accession	<a href="#">P09972</a>
Reactivity	Human, Mouse, Monkey
Host	Rabbit
Clonality	Polyclonal
Isotype	Rabbit IgG
Calculated MW	39456

**Aldolase C (ALDOC) Antibody (NT) - Additional Information****Gene ID 230**

Positive Control	Western blot: human brain tissue lysate.
Application & Usage	Western blot: ~1:1000.
<b>Other Names</b>	
ALDOC; ALDC; Fructose-bisphosphate aldolase C; Fructose-bisphosphate aldolase C; Brain-type aldolase	

**Target/Specificity**  
ALDOC**Antibody Form**  
Liquid**Appearance**  
Colorless liquid**Formulation**  
100 µl of antibody in PBS with 0.09% (W/V) sodium azide**Handling**  
The antibody solution should be gently mixed before use.**Reconstitution & Storage**  
-20 °C**Background Descriptions****Precautions**

Aldolase C (ALDOC) Antibody (NT) is for research use only and not for use in diagnostic or therapeutic procedures.

## Aldolase C (ALDOC) Antibody (NT) - Protein Information

**Name** ALDOC

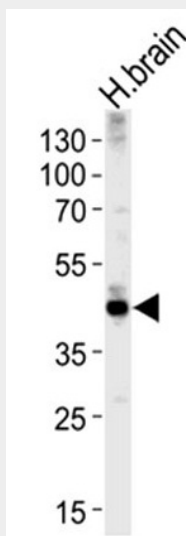
**Synonyms** ALDC

## Aldolase C (ALDOC) Antibody (NT) - Protocols

Provided below are standard protocols that you may find useful for product applications.

- [Western Blot](#)
- [Blocking Peptides](#)
- [Dot Blot](#)
- [Immunohistochemistry](#)
- [Immunofluorescence](#)
- [Immunoprecipitation](#)
- [Flow Cytometry](#)
- [Cell Culture](#)

## Aldolase C (ALDOC) Antibody (NT) - Images



Western blot analysis of lysate from human brain tissue lysate, using ALDOC Antibody. A goat anti-rabbit IgG H&L (HRP) at 1:5000 dilution was used as the secondary antibody. Lysate at 35 µg per lane.

## Aldolase C (ALDOC) Antibody (NT) - Background

Fructose 1, 6-bisphosphate aldolase catalyses the reversible condensation of glyceralone-P and glyceraldehyde 3-phosphate into fructose 1, 6-bisphosphate. Fructose 1, 6-bisphosphate aldolase exists as three forms, the muscle-specific Aldolase A, the liver-specific aldolase B, and the brain-specific aldolase C. Aldolase A, B, and C arose from a common ancestral gene, from which aldolase B first diverged. Aldolase A is one of the most highly conserved enzymes known, with only about 2% of the residues changing per 100 million years. Aldolase B is regulated by the hormones insulin and glucagon and has been implicated in hereditary fructose intolerance disease. Aldolase C is a polypeptide that is exclusively expressed in Purkinje cells. Aldolase C-positive Purkinje cells are organized in the cerebellum as stripes or bands that run from anterior to posterior across the

cerebellum and alternate with bands of Aldolase C-negative Purkinje cells.