

ANGPTL1 Antibody (NT)
Rabbit Polyclonal Antibody
Catalog # ABV11311**Specification**

ANGPTL1 Antibody (NT) - Product Information

Application	FC
Primary Accession	O95841
Host	Rabbit
Clonality	Polyclonal
Isotype	Rabbit IgG
Calculated MW	56720

ANGPTL1 Antibody (NT) - Additional Information**Gene ID** 9068

Positive Control	Western blot: HeLa cell lysate, IHC: Human placenta tissue, FACS: HeLa cells.
Application & Usage	Western blot: ~1:1000, IHC: ~1:50-1:100, FACS: ~1:10-1:50.

Other Names

ANGPTL1; ANG3; ANGPT3; ARP1; Angiopoietin-related protein 1; Angiopoietin-3; Angiopoietin-like protein 1

Target/Specificity

ANGPTL1

Antibody Form

Liquid

Appearance

Colorless liquid

Formulation

100 µl of antibody in PBS with 0.09% (W/V) sodium azide

Handling

The antibody solution should be gently mixed before use.

Reconstitution & Storage

-20 °C

Background Descriptions**Precautions**

ANGPTL1 Antibody (NT) is for research use only and not for use in diagnostic or therapeutic procedures.

ANGPTL1 Antibody (NT) - Protein Information

Name ANGPTL1

Synonyms ANG3, ANGPT3, ARP1

Cellular Location

Secreted.

Tissue Location

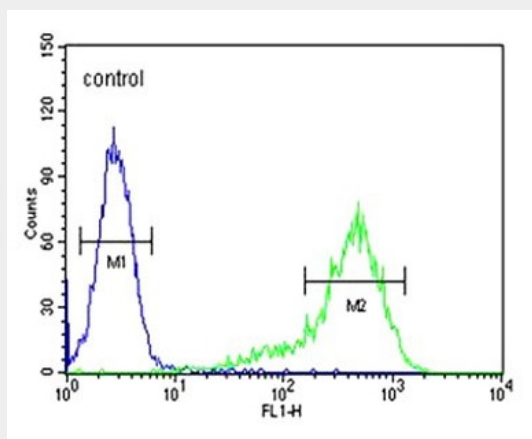
Highly expressed in adrenal gland, placenta, thyroid gland, heart, skeletal muscle and small intestine. Weakly expressed in testis, ovary, colon, pancreas, kidney and stomach

ANGPTL1 Antibody (NT) - Protocols

Provided below are standard protocols that you may find useful for product applications.

- [Western Blot](#)
- [Blocking Peptides](#)
- [Dot Blot](#)
- [Immunohistochemistry](#)
- [Immunofluorescence](#)
- [Immunoprecipitation](#)
- [Flow Cytometry](#)
- [Cell Culture](#)

ANGPTL1 Antibody (NT) - Images



ANGPTL1 Antibody flow cytometric analysis of Hela cells(right histogram)compared to a negative control cell(left histogram). Fitch-conjugated goat-anti-rabbit secondary antibodies were used for the analysis.

ANGPTL1 Antibody (NT) - Background

Angptl1 (angiopoietin-like 1), also known as angioarrestin, ARP1, ANGPT3 or previously known as angiopoietin 3 (ANG3), is a member of the angiopoietin-like family. It is highly expressed in adult tissues, particularly adrenal gland, thyroid, placenta and small intestine. Angptl1 exists as a disulfide-linked dimer and shares 45.1% identity with Ang-1 and 59% identity with Angptl2. Angptl1

consists of an N-terminus with a coiled-coil domain, potential glycosylation sites and a C-terminus with a fibrinogen-like domain. It is a secreted protein but does not function as a growth factor in endothelial cells. Angptl1 plays a distinct role in the regulation of angiogenesis; inhibiting proliferation, migration, tube formation and endothelial cell adhesion. To exert this inhibitory activity, Angptl1 is speculated to interact with a receptor on endothelial cells. In a wide variety of tumor tissues, Angptl1 expression is down-regulated suggesting that a major function of this protein involves its antiangiogenic properties.