

H4pan polyclonal antibody
Rabbit Polyclonal Antibody
Catalog # ABV11360**Specification**

H4pan polyclonal antibody - Product Information

Application	CHIP, DB, E
Primary Accession	P68431
Host	Rabbit
Clonality	Polyclonal
Isotype	Rabbit IgG
Calculated MW	15404

H4pan polyclonal antibody - Additional Information**Gene ID** 8350;8351;8352;8353;8354;8355;8356;8357;8358;8968

Positive Control	ELISA: Antigen, CHIP: HeLa cells, Dot blot: Histone Peptides.
Application & Usage	ELISA: 1:500, Dot Blot: 1:10,000, CHIP: 2-5 µg/CHIP.

Other Names
Histone H4**Target/Specificity**
H4pan**Antibody Form**
Liquid**Appearance**
Colorless liquid**Formulation**
In PBS with 0.05% sodium azide and 0.05% ProClin 300.**Handling**
The antibody solution should be gently mixed before use.**Reconstitution & Storage**
-20 °C**Background Descriptions****Precautions**

H4pan polyclonal antibody is for research use only and not for use in diagnostic or therapeutic procedures.

H4pan polyclonal antibody - Protein Information

Name H3C1 ([HGNC:4766](#))

Synonyms H3FA, HIST1H3A

Function

Core component of nucleosome. Nucleosomes wrap and compact DNA into chromatin, limiting DNA accessibility to the cellular machineries which require DNA as a template. Histones thereby play a central role in transcription regulation, DNA repair, DNA replication and chromosomal stability. DNA accessibility is regulated via a complex set of post-translational modifications of histones, also called histone code, and nucleosome remodeling.

Cellular Location

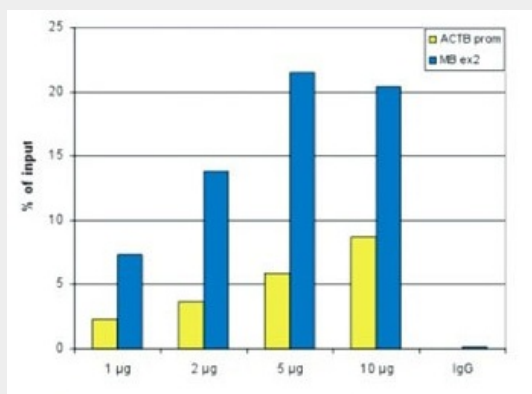
Nucleus. Chromosome.

H4pan polyclonal antibody - Protocols

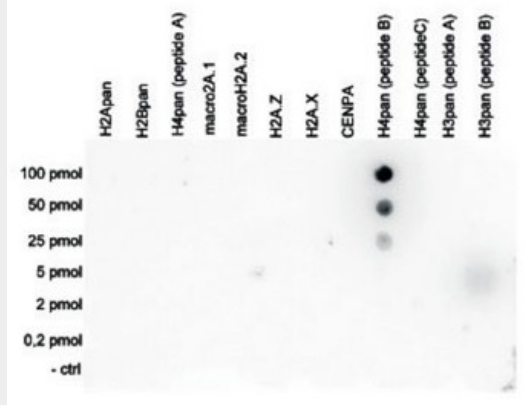
Provided below are standard protocols that you may find useful for product applications.

- [Western Blot](#)
- [Blocking Peptides](#)
- [Dot Blot](#)
- [Immunohistochemistry](#)
- [Immunofluorescence](#)
- [Immunoprecipitation](#)
- [Flow Cytometry](#)
- [Cell Culture](#)

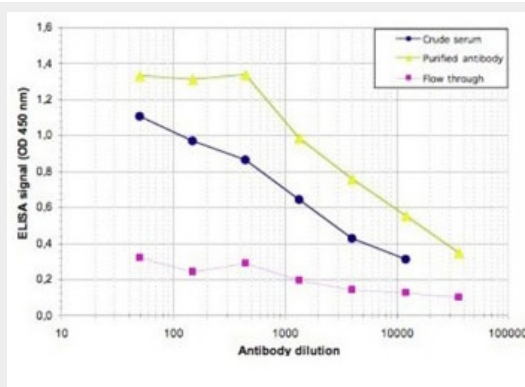
H4pan polyclonal antibody - Images



ChIP assays were performed using HeLa cells and the antibody and optimized PCR primer sets for qPCR. A titration of the antibody consisting of 1, 2, 5, and 10 µl per ChIP experiment was analysed. IgG (5 µg/IP) was used as negative control. The Fig shows the recovery, expressed as a % of input (the relative amount of IP DNA compared to input DNA after qPCR analysis).



A Dot Blot analysis was performed to test the cross reactivity of the antibody with the peptide used for immunization of the rabbit and other peptides containing unmodified sequences of different histones. 100 to 0.2 pmol of the peptide containing the respective histone modification were spotted on a membrane. The Fig shows a high specificity of the antibody for the modification of interest.



To determine the titer, an ELISA was performed using a serial dilution of the antibody. The antigen used was a peptide containing the histone modification of interest. By plotting the absorbance against the antibody dilution the titer of the antibody was estimated to be 1:11250.

H4pan polyclonal antibody - Background

Histones are the main constituents of the protein part of chromosomes of eukaryotic cells. They are rich in the amino acids arginine and lysine and have been greatly conserved during evolution. Histones pack the DNA into tight masses of chromatin. Two core histones of each class H2A, H2B, H3 and H4 assemble and are wrapped by 146 base pairs of DNA to form one octameric nucleosome. Histones play a central role in the regulation of transcription, DNA repair, DNA replication and chromosomal stability. These different functions are established via a complex set of post-translational modifications which either directly or indirectly alter chromatin structure and DNA accessibility to facilitate transcriptional activation or repression or other nuclear processes.