

**Paf1 polyclonal antibody**  
**Rabbit Polyclonal Antibody**  
**Catalog # ABV11366****Specification**

---

**Paf1 polyclonal antibody - Product Information**

Application	<b>WB</b>
Host	<b>Rabbit</b>
Clonality	<b>Polyclonal</b>
Isotype	<b>Rabbit IgG</b>

**Paf1 polyclonal antibody - Additional Information**

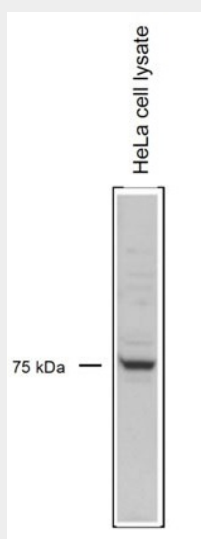
Positive Control	<b>Western blot: HeLa cells, ChIP.</b>
Application & Usage	<b>WB: 1:1000, ChIP: 1-5 µg/ChIP.</b>
<b>Other Names</b>	
PD2	

**Target/Specificity**  
Paf1**Antibody Form**  
Liquid**Appearance**  
Colorless liquid**Formulation**  
In PBS with 0.05% sodium azide and 0.05% ProClin 300.**Handling**  
The antibody solution should be gently mixed before use.**Reconstitution & Storage**  
-20 °C**Background Descriptions****Precautions**  
Paf1 polyclonal antibody is for research use only and not for use in diagnostic or therapeutic procedures.**Paf1 polyclonal antibody - Protein Information****Paf1 polyclonal antibody - Protocols**

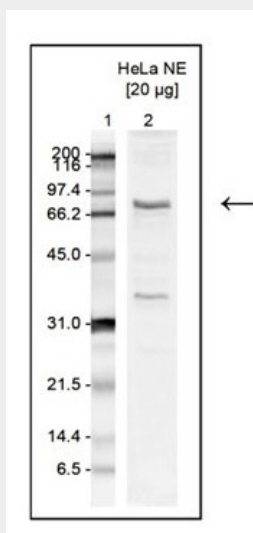
Provided below are standard protocols that you may find useful for product applications.

- [Western Blot](#)
- [Blocking Peptides](#)
- [Dot Blot](#)
- [Immunohistochemistry](#)
- [Immunofluorescence](#)
- [Immunoprecipitation](#)
- [Flow Cytometry](#)
- [Cell Culture](#)

#### **Paf1 polyclonal antibody - Images**



Nuclear extracts from HeLa cells (20 µg) were analysed by western blot using the antibody diluted 1:1,000 in TBS-Tween containing 5% skimmed milk.



Nuclear extracts from HeLa cells (20 µg) were analysed by western blot using the antibody diluted 1:1,000 in TBS-Tween containing 5% skimmed milk.

#### **Paf1 polyclonal antibody - Background**

PAF is a five-subunit protein complex composed of Paf1, Cdc73, Leo1, Rtf1 and Ctr9, which was

first purified from yeast. The yeast PAF (yPAF) complex interacts with RNA polymerase II and coordinates the setting of histone marks associated with active transcription. The human PAF (hPAF) complex shares four subunits with yPAF (hCtr9, hPaf1, hLeo1 and Cdc73), but contains an additional higher eukaryotic-specific subunit, hSki8. In addition to coordinating events during transcription (initiation, promoter clearance and elongation); PAF also coordinates events in RNA quality control.