

**WDR5 polyclonal antibody**  
**Rabbit Polyclonal Antibody**  
**Catalog # ABV11380****Specification**

---

**WDR5 polyclonal antibody - Product Information**

Application	E, WB
Primary Accession	<a href="#">P61964</a>
Host	Rabbit
Clonality	Polyclonal
Isotype	Rabbit IgG
Calculated MW	36588

**WDR5 polyclonal antibody - Additional Information****Gene ID** 11091

Positive Control

**Western blot: NIH3T3 and embryonic stem cells, ELISA: Peptides.**

Application &amp; Usage

**Western Blot: 1:1000, ELISA: 1:100 - 1:500.****Other Names**

BIG3, SWD3

**Target/Specificity**

WDR5

**Antibody Form**

Liquid

**Appearance**

Colorless liquid

**Formulation**

In PBS with 0.05% (W/V) sodium azide.

**Handling**

The antibody solution should be gently mixed before use.

**Reconstitution & Storage**

-20 °C

**Background Descriptions****Precautions**

WDR5 polyclonal antibody is for research use only and not for use in diagnostic or therapeutic procedures.

## WDR5 polyclonal antibody - Protein Information

**Name** WDR5

**Synonyms** BIG3

### Function

Contributes to histone modification (PubMed:<a href="http://www.uniprot.org/citations/19131338" target="\_blank">19131338</a>, PubMed:<a href="http://www.uniprot.org/citations/19556245" target="\_blank">19556245</a>, PubMed:<a href="http://www.uniprot.org/citations/19103755" target="\_blank">19103755</a>, PubMed:<a href="http://www.uniprot.org/citations/20018852" target="\_blank">20018852</a>, PubMed:<a href="http://www.uniprot.org/citations/16600877" target="\_blank">16600877</a>, PubMed:<a href="http://www.uniprot.org/citations/16829960" target="\_blank">16829960</a>). May position the N-terminus of histone H3 for efficient trimethylation at 'Lys-4' (PubMed:<a href="http://www.uniprot.org/citations/16829960" target="\_blank">16829960</a>). As part of the MLL1/MLL complex it is involved in methylation and dimethylation at 'Lys-4' of histone H3 (PubMed:<a href="http://www.uniprot.org/citations/19556245" target="\_blank">19556245</a>). H3 'Lys-4' methylation represents a specific tag for epigenetic transcriptional activation (PubMed:<a href="http://www.uniprot.org/citations/18840606" target="\_blank">18840606</a>). As part of the NSL complex it may be involved in acetylation of nucleosomal histone H4 on several lysine residues (PubMed:<a href="http://www.uniprot.org/citations/19103755" target="\_blank">19103755</a>, PubMed:<a href="http://www.uniprot.org/citations/20018852" target="\_blank">20018852</a>). May regulate osteoblasts differentiation (By similarity). In association with RBBP5 and ASH2L, stimulates the histone methyltransferase activities of KMT2A, KMT2B, KMT2C, KMT2D, SETD1A and SETD1B (PubMed:<a href="http://www.uniprot.org/citations/21220120" target="\_blank">21220120</a>, PubMed:<a href="http://www.uniprot.org/citations/22266653" target="\_blank">22266653</a>).

### Cellular Location

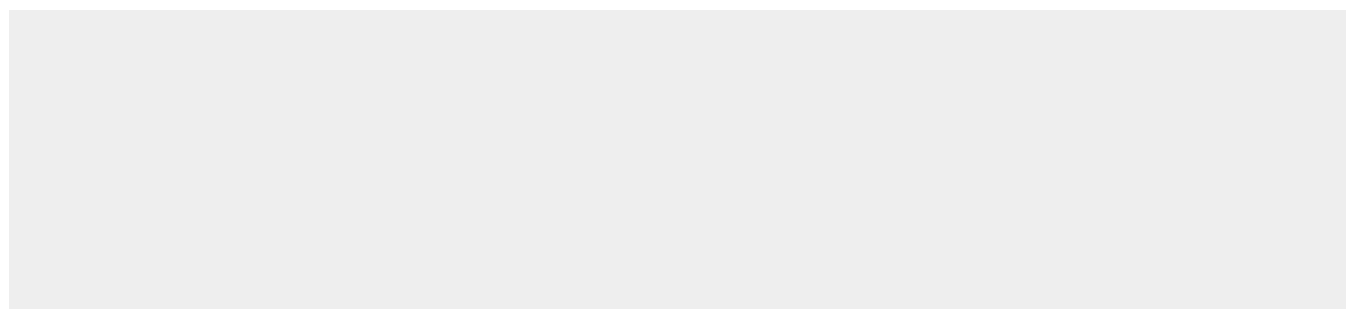
Nucleus

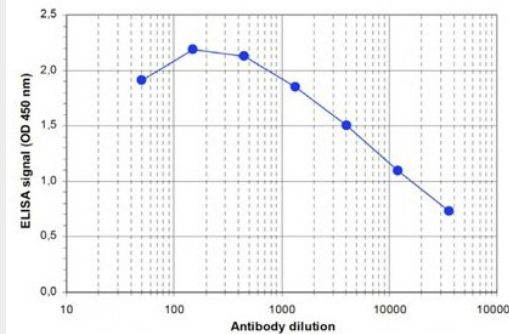
## WDR5 polyclonal antibody - Protocols

Provided below are standard protocols that you may find useful for product applications.

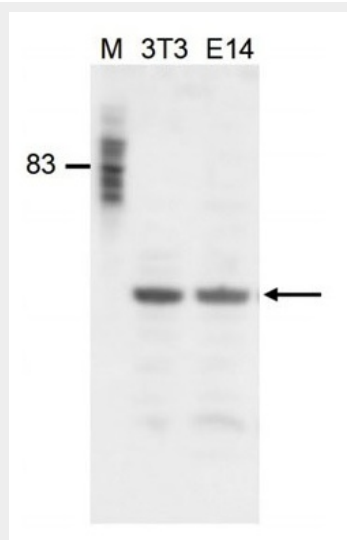
- [Western Blot](#)
- [Blocking Peptides](#)
- [Dot Blot](#)
- [Immunohistochemistry](#)
- [Immunofluorescence](#)
- [Immunoprecipitation](#)
- [Flow Cytometry](#)
- [Cell Culture](#)

## WDR5 polyclonal antibody - Images





To determine the titer, an ELISA was performed using a serial dilution of the antibody. By plotting the absorbance against the antibody dilution (Figure 1), the titer of the antibody was estimated to be 1:12,300.



Western blot was performed on whole cell lysates of NIH3T3 cells and embryonic stem cells with the antibody diluted 1:1,000 in TBS-Tween containing 5% skimmed milk (Figure 2). The molecular weight marker (in kDa) is shown on the left; the location of the protein of interest is indicated on the right.

### WDR5 polyclonal antibody - Background

Wdr5 belongs to the family of WD repeat proteins which are involved in different cellular processes such as cell cycle progression, signal transduction, apoptosis, and gene regulation. It is a component of the Set1A and Set1B histone H3 methylation complexes. These complexes methylate lysine 4 of H3, thereby activating gene transcription. Wdr5 interacts with H3 dimethyl K4, but not with tri or mono methylated H3K4.