

**CD58 Antibody**  
**Rabbit Polyclonal Antibody**  
**Catalog # ABV11450****Specification**

---

**CD58 Antibody - Product Information**

Application	WB
Primary Accession	<a href="#">P19256</a>
Reactivity	Human, Mouse, Rat
Host	Rabbit
Clonality	Polyclonal
Isotype	Rabbit IgG
Calculated MW	28147

**CD58 Antibody - Additional Information****Gene ID 965**

Positive Control	WB: HEK293T, Raw264.7, H9C2 whole cell lysates
Application & Usage	WB: 1:500 - 1:1000

**Other Names**

LFA3; Lymphocyte function-associated antigen 3; Ag3; Surface glycoprotein LFA-3; CD58

**Target/Specificity**

CD58

**Antibody Form**

Liquid

**Appearance**

Colorless liquid

**Formulation**

1 mg/ml in 0.42% Potassium phosphate, 0.87% Sodium chloride, pH 7.3, 30% glycerol, and 0.01% sodium azide.

**Handling**

The antibody solution should be gently mixed before use.

**Reconstitution & Storage**

-20 °C

**Background Descriptions****Precautions**

CD58 Antibody is for research use only and not for use in diagnostic or therapeutic procedures.

## CD58 Antibody - Protein Information

**Name** CD58

**Synonyms** LFA3

### Function

Ligand of the T-lymphocyte CD2 glycoprotein. This interaction is important in mediating thymocyte interactions with thymic epithelial cells, antigen-independent and -dependent interactions of T-lymphocytes with target cells and antigen-presenting cells and the T-lymphocyte rosetting with erythrocytes. In addition, the LFA-3/CD2 interaction may prime response by both the CD2+ and LFA-3+ cells.

### Cellular Location

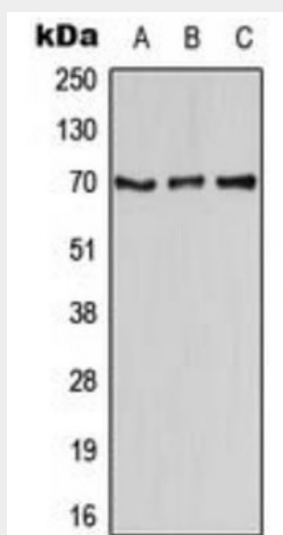
[Isoform 1]: Cell membrane; Single-pass type I membrane protein

## CD58 Antibody - Protocols

Provided below are standard protocols that you may find useful for product applications.

- [Western Blot](#)
- [Blocking Peptides](#)
- [Dot Blot](#)
- [Immunohistochemistry](#)
- [Immunofluorescence](#)
- [Immunoprecipitation](#)
- [Flow Cytometry](#)
- [Cell Culture](#)

## CD58 Antibody - Images



Western blot analysis of CD58 expression in HEK293T (A), Raw264.7 (B), H9C2 (C) whole cell lysates.

## CD58 Antibody - Background

CD58, also known as lymphocyte function-associated antigen 3 (LFA-3) is a 45-70 kD cell surface

protein that is a member of the immunoglobulin superfamily. Alternative splicing of CD58 gives rise to transmembrane and glycosylphosphatidylinositol (GPI)-anchored forms on cell surface. CD58 is expressed on both hematopoietic and non-hematopoietic cells including B cells, T cells, monocytes, erythrocytes, endothelial cells, epithelial cells, and fibroblasts. High levels are observed on memory T cells and dendritic cells. CD58 expressed on antigen presenting cells and target cells enhances T cell recognition via the binding of its cognate ligand, CD2, on the T cell surface.