

**Plasmin Antibody**  
**Rabbit Polyclonal Antibody**  
**Catalog # ABV11485****Specification**

---

**Plasmin Antibody - Product Information**

Application	WB
Primary Accession	<a href="#">P00747</a>
Reactivity	Human, Mouse, Rat
Host	Rabbit
Clonality	Polyclonal
Isotype	Rabbit IgG
Calculated MW	90569

**Plasmin Antibody - Additional Information****Gene ID** 5340

Positive Control	Western blot: Human plasmin
Application & Usage	Western blot: 1-4 µg
<b>Other Names</b>	
Plasminogen	

**Target/Specificity**  
Plasmin**Antibody Form**  
Liquid**Appearance**  
Colorless liquid**Formulation**  
100 µg (0.5 mg/ml) of antibody in PBS pH 7.2, 0.01 % BSA, 0.03 % ProClin®, and 50 % glycerol.**Handling**  
The antibody solution should be gently mixed before use.**Reconstitution & Storage**  
-20°C**Background Descriptions****Precautions**  
Plasmin Antibody is for research use only and not for use in diagnostic or therapeutic procedures.**Plasmin Antibody - Protein Information**

**Name** PLG**Function**

Plasmin dissolves the fibrin of blood clots and acts as a proteolytic factor in a variety of other processes including embryonic development, tissue remodeling, tumor invasion, and inflammation. In ovulation, weakens the walls of the Graafian follicle. It activates the urokinase-type plasminogen activator, collagenases and several complement zymogens, such as C1 and C5. Cleavage of fibronectin and laminin leads to cell detachment and apoptosis. Also cleaves fibrin, thrombospondin and von Willebrand factor. Its role in tissue remodeling and tumor invasion may be modulated by CSPG4. Binds to cells.

**Cellular Location**

Secreted. Note=Locates to the cell surface where it is proteolytically cleaved to produce the active plasmin. Interaction with HRG tethers it to the cell surface

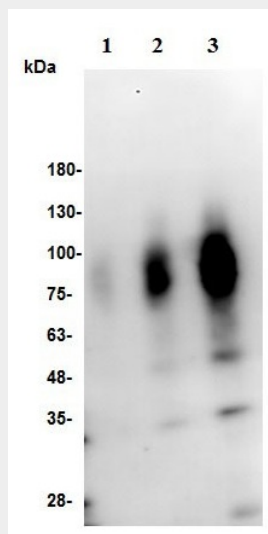
**Tissue Location**

Present in plasma and many other extracellular fluids. It is synthesized in the liver

**Plasmin Antibody - Protocols**

Provided below are standard protocols that you may find useful for product applications.

- [Western Blot](#)
- [Blocking Peptides](#)
- [Dot Blot](#)
- [Immunohistochemistry](#)
- [Immunofluorescence](#)
- [Immunoprecipitation](#)
- [Flow Cytometry](#)
- [Cell Culture](#)

**Plasmin Antibody - Images**

Western blot with h Plasmin antibody: Lane 1: 2 ng Human plasmin; Lane 2: 10 ng Human plasmin; Lane 3: 50 ng Human plasmin

**Plasmin Antibody - Background**

Plasmin dissolves the fibrin of blood clots and acts as a proteolytic factor in a variety of other processes including embryonic development, tissue remodeling, tumor invasion, and inflammation. In ovulation, weakens the walls of the Graafian follicle. It activates the urokinase-type plasminogen activator, collagenases and several complement zymogens, such as C1 and C5. Cleavage of fibronectin and laminin leads to cell detachment and apoptosis. Also cleaves fibrin, thrombospondin and von Willebrand factor. Its role in tissue remodeling and tumor invasion may be modulated by CSPG4. Binds to cells