

PAK1 Antibody
Purified Rabbit Polyclonal Antibody
Catalog # ABV11522**Specification**

PAK1 Antibody - Product Information

Application	WB
Primary Accession	Q13153
Reactivity	Human
Host	Rabbit
Clonality	Polyclonal
Isotype	Rabbit IgG
Calculated MW	60647

PAK1 Antibody - Additional Information**Gene ID** 5058**Other Names**

PAK1, PAK-1, p21/Cdc42/Rac1-activated kinase 1. PAK alpha, Alpha-PAK , p65-PAK, MGC130001, MGC130000

Target/Specificity

PAK1

Formulation

100 µg (0.2 mg/ml) Protein A affinity purified rabbit anti-PAK1 polyclonal antibody in phosphate buffered saline (PBS), pH 7.2, containing 50% glycerol, 1% BSA, 0.02% thimerosal.

Handling

The antibody solution should be gently mixed before use.

Background Descriptions**Precautions**

PAK1 Antibody is for research use only and not for use in diagnostic or therapeutic procedures.

PAK1 Antibody - Protein Information**Name** PAK1 {ECO:0000303|PubMed:8805275, ECO:0000312|HGNC:HGNC:8590}**Function**

Protein kinase involved in intracellular signaling pathways downstream of integrins and receptor-type kinases that plays an important role in cytoskeleton dynamics, in cell adhesion, migration, proliferation, apoptosis, mitosis, and in vesicle-mediated transport processes (PubMed:10551809, PubMed:11896197),

PubMed:12876277,
PubMed:14585966,
PubMed:15611088,
PubMed:17726028,
PubMed:17989089,
PubMed:30290153).
Can directly phosphorylate BAD and protects cells against apoptosis (By similarity). Activated by
interaction with CDC42 and RAC1 (PubMed:8805275,
PubMed:9528787). Functions as a GTPase effector that links the Rho-related
GTPases CDC42 and RAC1 to the JNK MAP kinase pathway (PubMed:8805275,
PubMed:9528787). Phosphorylates
and activates MAP2K1, and thereby mediates activation of downstream MAP kinases (By
similarity). Involved in the reorganization of the actin cytoskeleton, actin stress fibers and of focal
adhesion complexes (PubMed:9395435,
PubMed:9032240). Phosphorylates the tubulin chaperone TBCB and thereby plays a
role in the regulation of microtubule biogenesis and organization of the tubulin cytoskeleton
(PubMed:15831477).
Plays a role in the regulation of insulin secretion in response to elevated glucose levels
(PubMed:22669945).
Part of a ternary complex that contains PAK1, DVL1 and MUSK that is important for
MUSK-dependent regulation of AChR clustering during the formation of the neuromuscular junction
(NMJ) (By similarity). Activity is inhibited in cells undergoing apoptosis, potentially due to binding
of CDC2L1 and CDC2L2 (PubMed:12624090). Phosphorylates MYL9/MLC2 (By similarity). Phosphorylates
RAF1 at 'Ser-338' and 'Ser-339' resulting in: activation of RAF1, stimulation of RAF1 translocation
to mitochondria, phosphorylation of BAD by RAF1, and RAF1 binding to BCL2 (PubMed:11733498).
Phosphorylates SNAI1 at 'Ser-246' promoting its transcriptional repressor activity by increasing its
accumulation in the nucleus (PubMed:15833848). In podocytes, promotes NR3C2 nuclear localization (By
similarity). Required for atypical chemokine receptor ACKR2-induced phosphorylation of LIMK1 and
cofilin (CFL1) and for the up-regulation of ACKR2 from endosomal compartment to cell membrane,
increasing its efficiency in chemokine uptake and degradation (PubMed:23633677). In synapses,
seems to mediate the regulation of F- actin cluster formation performed by SHANK3, maybe
through CFL1 phosphorylation and inactivation (By similarity). Plays a role in RUFY3-mediated
facilitating gastric cancer cells migration and invasion (PubMed:25766321). In response
to DNA damage, phosphorylates MORC2 which activates its ATPase activity and facilitates
chromatin remodeling (PubMed:23260667). In neurons, plays a crucial role in regulating GABA(A) receptor
synaptic stability and hence GABAergic inhibitory synaptic transmission through its role in F-actin
stabilization (By similarity). In hippocampal neurons, necessary for the formation of dendritic
spines and excitatory synapses; this function is dependent on kinase activity and may be exerted
by the regulation of actomyosin contractility through the phosphorylation of myosin II regulatory
light chain (MLC) (By similarity). Along with GIT1, positively regulates microtubule nucleation
during interphase (PubMed:27012601). Phosphorylates FXR1, promoting its localization to stress
granules and activity (PubMed:20417602).

Cellular Location

Cytoplasm. Cell junction, focal adhesion. Cell projection, lamellipodium. Cell membrane. Cell
projection, ruffle membrane. Cell projection, invadopodium. Nucleus, nucleoplasm. Chromosome.

Cytoplasm, cytoskeleton, microtubule organizing center, centrosome Note=Colocalizes with RUFY3, F-actin and other core migration components in invadopodia at the cell periphery (PubMed:25766321) Recruited to the cell membrane by interaction with CDC42 and RAC1 Recruited to focal adhesions upon activation. Colocalized with CIB1 within membrane ruffles during cell spreading upon readhesion to fibronectin. Upon DNA damage, translocates to the nucleoplasm when phosphorylated at Thr-212 where is co-recruited with MORC2 on damaged chromatin (PubMed:23260667). Localization to the centrosome does not depend upon the presence of gamma-tubulin (PubMed:27012601) Localization of the active, but not inactive, protein to the adhesions and edge of lamellipodia is mediated by interaction with GIT1 (PubMed:11896197). {ECO:0000250|UniProtKB:P35465, ECO:0000269|PubMed:11896197, ECO:0000269|PubMed:23260667, ECO:0000269|PubMed:25766321, ECO:0000269|PubMed:27012601}

Tissue Location

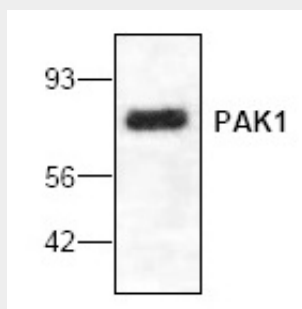
Overexpressed in gastric cancer cells and tissues (at protein level) (PubMed:25766321).

PAK1 Antibody - Protocols

Provided below are standard protocols that you may find useful for product applications.

- [Western Blot](#)
- [Blocking Peptides](#)
- [Dot Blot](#)
- [Immunohistochemistry](#)
- [Immunofluorescence](#)
- [Immunoprecipitation](#)
- [Flow Cytometry](#)
- [Cell Culture](#)

PAK1 Antibody - Images



Western blot analysis of PAK1 with transfected HEK293 cells.

PAK1 Antibody - Background

Human p21-GTPase-activated protein kinase 1 (PAK1) is a functional homolog of STE20 of *Saccharomyces cerevisiae*. PAK1 is a downstream effector of the Rho-family small GTPases Rac and Cdc42. A serine/threonine kinase, PAK1 induces the formation of filopodia and lamellipodia in Swiss 3T3 cells. PAK1 inhibits myosin light chain kinase, and appears to play a role in the regulation of apoptosis by phosphorylating the death agonist Bad. Membrane targeting of PAK1 induces neurite outgrowth. PAK1 may also regulate NFkB activation.