

TAOK1 Antibody
Purified Rabbit Polyclonal Antibody
Catalog # ABV11558**Specification**

TAOK1 Antibody - Product Information

Application	WB
Primary Accession	O88664
Other Accession	EDM05292
Reactivity	Human, Mouse, Rat
Host	Rabbit
Clonality	Polyclonal
Isotype	Rabbit IgG
Calculated MW	115952

TAOK1 Antibody - Additional Information**Gene ID** 286993**Other Names**

TAOK1, TAO kinase 1, MARKK, Microtubule affinity regulating kinase kinase, MAP3K16, PSK2, TAO1

Target/Specificity

TAOK1

Formulation

100 µg (0.5mg/ml) affinity purified rabbit polyclonal antibody in phosphate-buffered saline (PBS) containing 30% glycerol, 0.5% BSA and 0.01% thimerosal.

Handling

The antibody solution should be gently mixed before use.

Background Descriptions**Precautions**

TAOK1 Antibody is for research use only and not for use in diagnostic or therapeutic procedures.

TAOK1 Antibody - Protein Information**Name** Taok1**Synonyms** Tao1**Function**

Serine/threonine-protein kinase involved in various processes such as p38/MAPK14 stress-activated MAPK cascade, DNA damage response and regulation of cytoskeleton stability. Phosphorylates MAP2K3, MAP2K6 and MARK2. Acts as an activator of the p38/MAPK14

stress-activated MAPK cascade by mediating phosphorylation and subsequent activation of the upstream MAP2K3 and MAP2K6 kinases. Involved in G-protein coupled receptor signaling to p38/MAPK14. In response to DNA damage, involved in the G2/M transition DNA damage checkpoint by activating the p38/MAPK14 stress-activated MAPK cascade, probably by mediating phosphorylation of MAP2K3 and MAP2K6. Acts as a regulator of cytoskeleton stability by phosphorylating 'Thr-208' of MARK2, leading to activate MARK2 kinase activity and subsequent phosphorylation and detachment of MAPT/TAU from microtubules. Also acts as a regulator of apoptosis: regulates apoptotic morphological changes, including cell contraction, membrane blebbing and apoptotic bodies formation via activation of the MAPK8/JNK cascade. During fetal development, it plays an essential role in the regulation of neuronal differentiation and migration to the cortical plate (By similarity).

Cellular Location

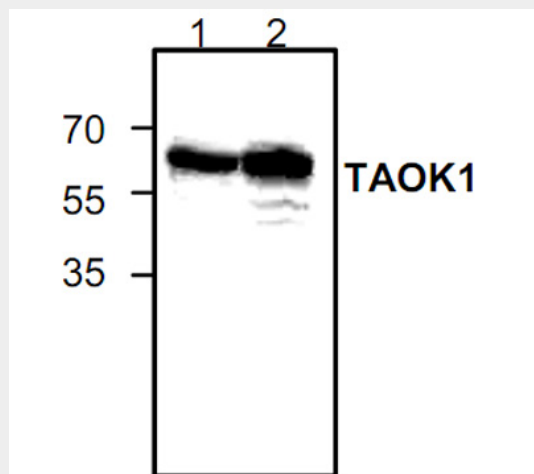
Cytoplasm.

TAOK1 Antibody - Protocols

Provided below are standard protocols that you may find useful for product applications.

- [Western Blot](#)
- [Blocking Peptides](#)
- [Dot Blot](#)
- [Immunohistochemistry](#)
- [Immunofluorescence](#)
- [Immunoprecipitation](#)
- [Flow Cytometry](#)
- [Cell Culture](#)

TAOK1 Antibody - Images



TAOK1 Antibody - Background

Serine/threonine-protein kinase TAO1 is an enzyme that in humans is encoded by the TAOK1 gene