

**M-CSF Antibody**  
**Purified Rabbit Polyclonal Antibody**  
**Catalog # ABV11580****Specification**

---

**M-CSF Antibody - Product Information**

|                   |                          |
|-------------------|--------------------------|
| Application       | WB                       |
| Primary Accession | <a href="#">P09603</a>   |
| Other Accession   | <a href="#">EAW56421</a> |
| Reactivity        | Human, Mouse             |
| Host              | Rabbit                   |
| Clonality         | Polyclonal               |
| Isotype           | Rabbit IgG               |
| Calculated MW     | 60179                    |

**M-CSF Antibody - Additional Information****Gene ID** 1435**Other Names**

Macrophage colony-stimulating factor 1; CSF-1; MCSF; M-CSF; Lanimostim; Processed macrophage colony-stimulating factor 1

**Target/Specificity**

M-CSF

**Formulation**

100 µg (0.5 mg/ml) affinity purified rabbit polyclonal antibody in phosphate-buffered saline (PBS) containing 30% glycerol, 0.5% BSA, and 0.01% thimerosal.

**Handling**

The antibody solution should be gently mixed before use.

**Background Descriptions****Precautions**

M-CSF Antibody is for research use only and not for use in diagnostic or therapeutic procedures.

**M-CSF Antibody - Protein Information****Name** CSF1**Function**

Cytokine that plays an essential role in the regulation of survival, proliferation and differentiation of hematopoietic precursor cells, especially mononuclear phagocytes, such as macrophages and monocytes. Promotes the release of pro-inflammatory chemokines, and thereby plays an important role in innate immunity and in inflammatory processes. Plays an important role in the

regulation of osteoclast proliferation and differentiation, the regulation of bone resorption, and is required for normal bone development. Required for normal male and female fertility. Promotes reorganization of the actin cytoskeleton, regulates formation of membrane ruffles, cell adhesion and cell migration. Plays a role in lipoprotein clearance.

#### **Cellular Location**

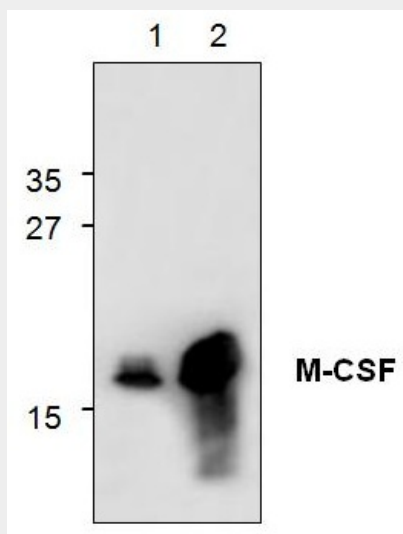
Cell membrane; Single-pass type I membrane protein

#### **M-CSF Antibody - Protocols**

Provided below are standard protocols that you may find useful for product applications.

- [Western Blot](#)
- [Blocking Peptides](#)
- [Dot Blot](#)
- [Immunohistochemistry](#)
- [Immunofluorescence](#)
- [Immunoprecipitation](#)
- [Flow Cytometry](#)
- [Cell Culture](#)

#### **M-CSF Antibody - Images**



Western blot analysis of M-CSF using recombinant human M-CSF. Lane1: 250ng; Lane2: 1ug.

#### **M-CSF Antibody - Background**

Macrophage Colony Stimulating Factor (M-CSF) is produced by various cell types, including fibroblasts, macrophages, and endothelial cells. M-CSF is involved in both the development and function of monocytes/macrophages. The recombinant M-CSF is a disulfide-linked homodimer composed of two 18.2 kDa subunits of 156 amino acid residues.