

**VEGF Antibody**  
**Purified Rabbit Polyclonal Antibody**  
**Catalog # ABV11592****Specification**

---

**VEGF Antibody - Product Information**

Application	<b>WB</b>
Primary Accession	<a href="#">P15692</a>
Other Accession	<a href="#">NP_001020539</a>
Reactivity	<b>Human</b>
Host	<b>Rabbit</b>
Clonality	<b>Polyclonal</b>
Isotype	<b>Rabbit IgG</b>
Calculated MW	<b>43597</b>

**VEGF Antibody - Additional Information****Gene ID** 7422**Other Names**

vascular endothelial growth factor

**Target/Specificity**

VEGF

**Formulation**

100 µg (0.5 mg/ml) affinity purified rabbit anti-human VEGF polyclonal antibody in phosphate buffered saline (PBS), pH 7.2, containing 30% glycerol and 0.01% thimerosal.

**Handling**

The antibody solution should be gently mixed before use.

**Background Descriptions****Precautions**

VEGF Antibody is for research use only and not for use in diagnostic or therapeutic procedures.

**VEGF Antibody - Protein Information****Name** VEGFA**Synonyms** VEGF**Function**

[N-VEGF]: Participates in the induction of key genes involved in the response to hypoxia and in the induction of angiogenesis such as HIF1A (PubMed:&lt;a href="http://www.uniprot.org/citations/35455969" target="\_blank"&gt;35455969&lt;/a&gt;). Involved in

protecting cells from hypoxia- mediated cell death (By similarity).

#### Cellular Location

[N-VEGF]: Cytoplasm. Nucleus. Note=Cytoplasmic in normoxic conditions and localizes to the nucleus under hypoxic conditions [Isoform L-VEGF189]: Endoplasmic reticulum. Golgi apparatus. Secreted, extracellular space, extracellular matrix [Isoform VEGF165]: Secreted

#### Tissue Location

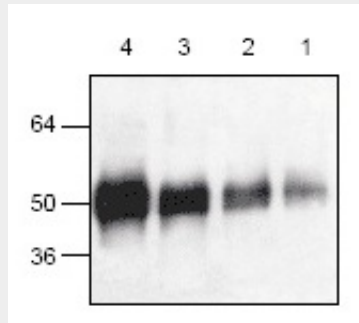
Higher expression in pituitary tumors than the pituitary gland. [Isoform VEGF165]: Widely expressed. [Isoform VEGF206]: Not widely expressed.

### VEGF Antibody - Protocols

Provided below are standard protocols that you may find useful for product applications.

- [Western Blot](#)
- [Blocking Peptides](#)
- [Dot Blot](#)
- [Immunohistochemistry](#)
- [Immunofluorescence](#)
- [Immunoprecipitation](#)
- [Flow Cytometry](#)
- [Cell Culture](#)

### VEGF Antibody - Images



Western blot analysis with recombinant His-Tagged VEGF protein. Lane1: 10ng rh-VEGF; Lane2: 50ng rh-VEGF; Lane3: 250ng rh-VEGF; Lane4: 1ug rh-VEGF.

### VEGF Antibody - Background

VEGF (Vascular Endothelial Growth Factor) is a secreted homodimeric protein, secreted by a variety of vascularized tissues. VEGF stimulates endothelial cell growth, angiogenesis, and capillary permeability. Human VEGF is a 38.2 kDa homodimeric protein consisting of two 165 amino acid polypeptide chains.