

VEGF Antibody
Purified Rabbit Polyclonal Antibody
Catalog # ABV11593**Specification**

VEGF Antibody - Product Information

Application	WB
Primary Accession	P16612
Other Accession	NP_001103803
Reactivity	Rat
Host	Rabbit
Clonality	Polyclonal
Isotype	Rabbit IgG
Calculated MW	25239

VEGF Antibody - Additional Information**Gene ID** 83785**Other Names**

vascular endothelial growth factor

Target/Specificity

VEGF

Formulation

100 µg (0.5 mg/ml) affinity purified rabbit anti-VEGF polyclonal antibody in phosphate buffered saline (PBS), pH 7.2, containing 30% glycerol, 0.5% BSA and 0.01% thimerosal.

Handling

The antibody solution should be gently mixed before use.

Background Descriptions**Precautions**

VEGF Antibody is for research use only and not for use in diagnostic or therapeutic procedures.

VEGF Antibody - Protein Information**Name** Vegfa**Synonyms** Vegf**Function**

Growth factor active in angiogenesis, vasculogenesis and endothelial cell growth. Induces endothelial cell proliferation, promotes cell migration, inhibits apoptosis and induces permeabilization of blood vessels. Binds to the FLT1/VEGFR1 and KDR/VEGFR2 receptors, heparan

sulfate and heparin. May play a role in increasing vascular permeability during lactation, when increased transport of molecules from the blood is required for efficient milk protein synthesis. Binding to NRP1 receptor initiates a signaling pathway needed for motor neuron axon guidance and cell body migration, including for the caudal migration of facial motor neurons from rhombomere 4 to rhombomere 6 during embryonic development (By similarity). Also binds the DEAR/FBXW7-AS1 receptor (By similarity).

Cellular Location

Secreted. Note=VEGF-A120 is acidic and freely secreted. VEGF-A164 is more basic, has heparin-binding properties and, although a significant proportion remains cell-associated, most is freely secreted. VEGF-A188 is very basic, it is cell-associated after secretion and is bound avidly by heparin and the extracellular matrix, although it may be released as a soluble form by heparin, heparinase or plasmin (By similarity).

Tissue Location

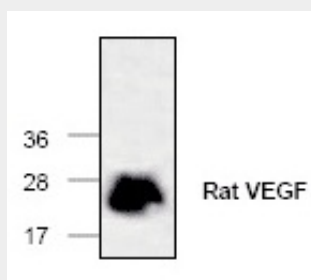
Expressed in the pituitary, in brain, in particularly in supraoptic and paraventricular nuclei and the choroid plexus. Also found abundantly in the corpus luteum of the ovary and in kidney glomeruli. Expressed in the ductal epithelial cells of post-pubertal mammary glands. Expressed in the ductal and alveolar epithelial cells throughout the whole period of gestational evolution, lactation and involution.

VEGF Antibody - Protocols

Provided below are standard protocols that you may find useful for product applications.

- [Western Blot](#)
- [Blocking Peptides](#)
- [Dot Blot](#)
- [Immunohistochemistry](#)
- [Immunofluorescence](#)
- [Immunoprecipitation](#)
- [Flow Cytometry](#)
- [Cell Culture](#)

VEGF Antibody - Images



Western blot analysis of rat VEGF using recombinant Rat VEGF.

VEGF Antibody - Background

VEGF (Vascular Endothelial Growth Factor) is a secreted homodimeric protein, secreted by a variety of vascularized tissues. VEGF stimulates endothelial cell growth, angiogenesis, and capillary permeability.