

**PDGF-BB Antibody**  
**Purified Rabbit Polyclonal Antibody**  
**Catalog # ABV11602****Specification**

---

**PDGF-BB Antibody - Product Information**

Application	<b>WB</b>
Primary Accession	<a href="#">P01127</a>
Other Accession	<a href="#">NP_148937</a>
Reactivity	<b>Human</b>
Host	<b>Rabbit</b>
Clonality	<b>Polyclonal</b>
Isotype	<b>Rabbit IgG</b>
Calculated MW	<b>27283</b>

**PDGF-BB Antibody - Additional Information****Gene ID** 5155**Other Names**

platelet-derived growth factor subunit B

**Target/Specificity**

PDGF-BB

**Formulation**

200 µg (0.5 mg/ml) affinity purified rabbit anti-human PDGF-BB polyclonal antibody in phosphate buffered saline (PBS), pH 7.2, containing 30% glycerol and 0.01% thimerosal.

**Handling**

The antibody solution should be gently mixed before use.

**Background Descriptions****Precautions**

PDGF-BB Antibody is for research use only and not for use in diagnostic or therapeutic procedures.

**PDGF-BB Antibody - Protein Information****Name** PDGFB**Synonyms** PDGF2, SIS**Function**

Growth factor that plays an essential role in the regulation of embryonic development, cell proliferation, cell migration, survival and chemotaxis. Potent mitogen for cells of mesenchymal origin (PubMed:&lt;a href="http://www.uniprot.org/citations/26599395"&gt;

target="\_blank">26599395</a>). Required for normal proliferation and recruitment of pericytes and vascular smooth muscle cells in the central nervous system, skin, lung, heart and placenta. Required for normal blood vessel development, and for normal development of kidney glomeruli. Plays an important role in wound healing. Signaling is modulated by the formation of heterodimers with PDGFA (By similarity).

#### **Cellular Location**

Secreted. Note=Released by platelets upon wounding

#### **Tissue Location**

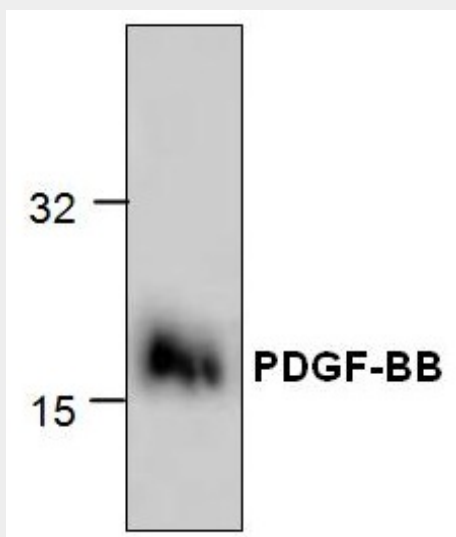
Expressed at high levels in the heart, brain (sustantia nigra), placenta and fetal kidney. Expressed at moderate levels in the brain (hippocampus), skeletal muscle, kidney and lung

### **PDGF-BB Antibody - Protocols**

Provided below are standard protocols that you may find useful for product applications.

- [Western Blot](#)
- [Blocking Peptides](#)
- [Dot Blot](#)
- [Immunohistochemistry](#)
- [Immunofluorescence](#)
- [Immunoprecipitation](#)
- [Flow Cytometry](#)
- [Cell Culture](#)

### **PDGF-BB Antibody - Images**



Western blot analysis using recombinant human PDGF-BB.

### **PDGF-BB Antibody - Background**

Human Platelet Derived Growth Factor (PDGF) is a potent mitogen for a wide range of cell types including fibroblasts, smooth muscle and connective tissue. PDGF is composed of a dimer of two chains termed the A chain and B chain, and thus can be present as AA or BB homodimers or as an AB heterodimer. Human PDGF-BB is a 14-18.0 kDa protein containing 109 amino acid residues.