

**PDGF-BB Antibody**  
**Purified Rabbit Polyclonal Antibody**  
**Catalog # ABV11603****Specification**

---

**PDGF-BB Antibody - Product Information**

Application	WB
Primary Accession	<a href="#">P31240</a>
Reactivity	Mouse
Host	Rabbit
Clonality	Polyclonal
Isotype	Rabbit IgG
Calculated MW	27382

**PDGF-BB Antibody - Additional Information****Gene ID** 18591**Other Names**

platelet-derived growth factor subunit B

**Target/Specificity**

PDGF-BB

**Formulation**

100 µg (0.5 mg/ml) affinity purified rabbit anti-murine PDGF-BB polyclonal antibody in phosphate buffered saline (PBS), pH 7.2, containing 30% glycerol and 0.01% thimerosal

**Handling**

The antibody solution should be gently mixed before use.

**Background Descriptions****Precautions**

PDGF-BB Antibody is for research use only and not for use in diagnostic or therapeutic procedures.

**PDGF-BB Antibody - Protein Information****Name** Pdgfb**Synonyms** Sis**Function**

Growth factor that plays an essential role in the regulation of embryonic development, cell proliferation, cell migration, survival and chemotaxis. Potent mitogen for cells of mesenchymal origin. Required for normal proliferation and recruitment of pericytes and vascular smooth muscle cells in the central nervous system, skin, lung, heart and placenta. Required for normal blood

vessel development, and for normal development of kidney glomeruli. Plays an important role in wound healing. Signaling is modulated by the formation of heterodimers with PDGFA.

#### **Cellular Location**

Secreted. Note=Released by platelets upon wounding.

#### **Tissue Location**

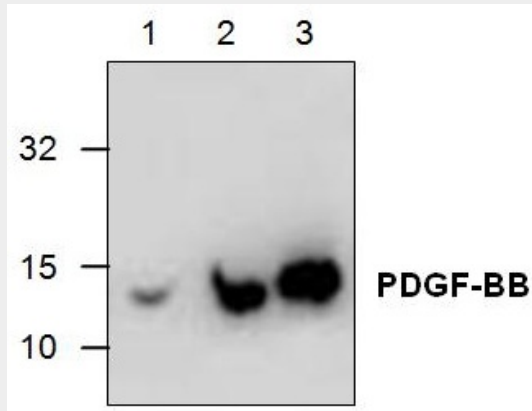
Localized to vascular smooth muscle cells. Also weakly expressed by cortical interstitial cells but absent in tubules Up-regulated in areas of renal fibrosis. In mice with unilateral ureteral obstruction, an increased expression in interstitial cells and in some tubules observed after day 4.

### **PDGF-BB Antibody - Protocols**

Provided below are standard protocols that you may find useful for product applications.

- [Western Blot](#)
- [Blocking Peptides](#)
- [Dot Blot](#)
- [Immunohistochemistry](#)
- [Immunofluorescence](#)
- [Immunoprecipitation](#)
- [Flow Cytometry](#)
- [Cell Culture](#)

### **PDGF-BB Antibody - Images**



Western blot analysis using recombinant murine PDGF-BB. Lane1: 50ng; lane2: 250ng; lane3: 1ug.

### **PDGF-BB Antibody - Background**

Mouse Platelet Derived Growth Factor (PDGF) is a potent mitogen for a wide range of cell types including fibroblasts, smooth muscle and connective tissue. PDGF-BB is a 24.4.0 kDa protein containing 109 amino acid residues. The reduced form of PDGF-BB shows ~14-18 kDa on SDS-PAGE.