

Alpha 1 Acid Glycoprotein Antibody
Purified Rabbit Polyclonal Antibody
Catalog # ABV11650**Specification**

Alpha 1 Acid Glycoprotein Antibody - Product Information

Application	WB
Primary Accession	P02763
Reactivity	Human, Mouse, Rat
Host	Rabbit
Clonality	Polyclonal
Isotype	rabbit IgG
Calculated MW	23540

Alpha 1 Acid Glycoprotein Antibody - Additional Information**Gene ID** 5004**Other Names**

AGP, Orosomucoid

Target/Specificity

Alpha 1 Acid Glycoprotein

Formulation

100 µg (0.5 mg/ml) of antibody in PBS pH 7.2, 0.01 % BSA, 0.03 % ProClin®, and 50 % glycerol.

Handling

The antibody solution should be gently mixed before use.

Background Descriptions**Precautions**

Alpha 1 Acid Glycoprotein Antibody is for research use only and not for use in diagnostic or therapeutic procedures.

Alpha 1 Acid Glycoprotein Antibody - Protein Information**Name** ORM1**Synonyms** AGP1**Function**

Functions as a transport protein in the blood stream. Binds various ligands in the interior of its beta-barrel domain. Also binds synthetic drugs and influences their distribution and availability in the body. Appears to function in modulating the activity of the immune system during the acute-phase reaction.

Cellular Location
Secreted.

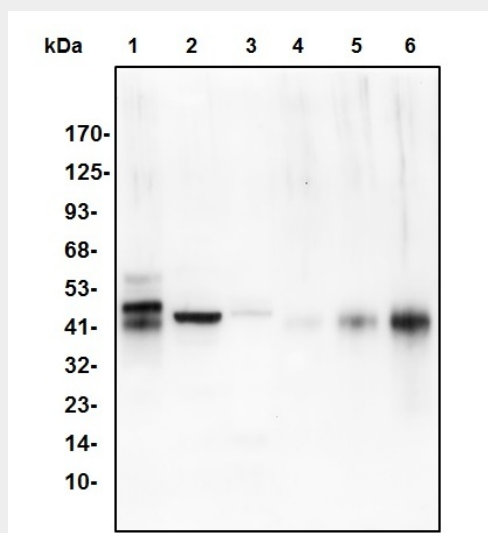
Tissue Location
Expressed by the liver and secreted in plasma.

Alpha 1 Acid Glycoprotein Antibody - Protocols

Provided below are standard protocols that you may find useful for product applications.

- [Western Blot](#)
- [Blocking Peptides](#)
- [Dot Blot](#)
- [Immunohistochemistry](#)
- [Immunofluorescence](#)
- [Immunoprecipitation](#)
- [Flow Cytometry](#)
- [Cell Culture](#)

Alpha 1 Acid Glycoprotein Antibody - Images



Western blot with human alpha1 Acid Glycoprotein antibody: lane1: human serum 1ug; lane2: mouse muscle 33ug; lane3: rat kidney 30ug; lane4: human alpha1 Acid Glycoprotein 2ng; lane5: human alpha1 Acid Glycoprotein 10ng; lane6: human alpha1 Acid Glycoprotein 50ng.

Alpha 1 Acid Glycoprotein Antibody - Background

Found in human plasma in concentrations of 55-140 mg per 100 ml. Classical standard glycoprotein for studies on the structure of the oligosaccharide units. Carbohydrate content is 40%. Its biological significance is unknown although it can bind progesterone 15 times as strongly as albumin. Sialic-acid-deficient alpha-1-AG has an affinity for vitamin B-12. Clinically, alpha 1 acid glycoprotein is an acute-phase reactant that together with haptoglobin is an indicator of acute inflammation. The alpha 1 acid glycoprotein: haptoglobin ratio is useful in studies of bone marrow disorders, hemolytic processes and metastases.