

**Hemopexin Polyclonal Antibody**  
**Purified Rabbit Polyclonal Antibody**  
**Catalog # ABV11655****Specification**

---

**Hemopexin Polyclonal Antibody - Product Information**

Application	WB
Primary Accession	<a href="#">Q9BS19</a>
Reactivity	Human, Mouse, Rat
Host	Rabbit
Clonality	Polyclonal
Isotype	Rabbit IgG

**Hemopexin Polyclonal Antibody - Additional Information****Other Names**

HPX, Beta-1B-glycoprotein, Beta-1B-glycoprotein

**Target/Specificity**

Hemopexin

**Formulation**

100 µg (0.5 mg/ml) of antibody in PBS pH 7.2, 0.01 % BSA, 0.03 % ProClin®, and 50 % glycerol.

**Handling**

The antibody solution should be gently mixed before use.

**Background Descriptions****Precautions**

Hemopexin Polyclonal Antibody is for research use only and not for use in diagnostic or therapeutic procedures.

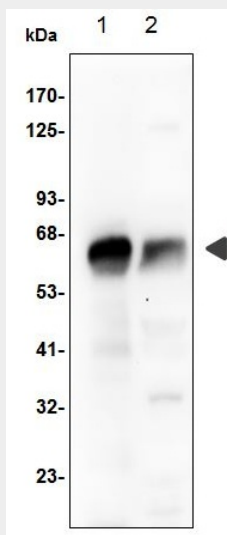
**Hemopexin Polyclonal Antibody - Protein Information****Hemopexin Polyclonal Antibody - Protocols**

Provided below are standard protocols that you may find useful for product applications.

- [Western Blot](#)
- [Blocking Peptides](#)
- [Dot Blot](#)
- [Immunohistochemistry](#)
- [Immunofluorescence](#)
- [Immunoprecipitation](#)

- [Flow Cytometry](#)
- [Cell Culture](#)

### Hemopexin Polyclonal Antibody - Images



Western blot analysis of Hemopexin using anti-Hemopexin antibody: lane1: human serum; lane2: M.muscle lysate.

### Hemopexin Polyclonal Antibody - Background

Hemopexin is a single-chain protein belonging to the family of blood transport proteins. It binds to heme released into the bloodstream during the degradation process. Recent studies have demonstrated that hemopexin acts as an extracellular antioxidant against hemoglobin-mediated damage in inflammation. Hemopexin protects against heme toxicity and conserves and recycles iron. Abnormal levels of hemopexin are associated with hemolytic anemia, chronic neuromuscular disease, and acute intermittent porphyria..