

IGFBP5 Antibody
Purified Rabbit Polyclonal Antibody
Catalog # ABV11659**Specification**

IGFBP5 Antibody - Product Information

Application	WB
Primary Accession	P24593
Reactivity	Human, Mouse, Rat
Host	Rabbit
Clonality	Polyclonal
Isotype	Rabbit IgG
Calculated MW	30570

IGFBP5 Antibody - Additional Information**Gene ID** 3488**Other Names**

Insulin-like growth factor-binding protein 5, IBP-5, IGF-binding protein 5, IGFBP-5

Target/Specificity

IGFBP5

Formulation

100 µg (0.5 mg/ml) of antibody in PBS pH 7.2, 0.01 % BSA, 0.03 % ProClin®, and 50 % glycerol.

Handling

The antibody solution should be gently mixed before use.

Background Descriptions**Precautions**

IGFBP5 Antibody is for research use only and not for use in diagnostic or therapeutic procedures.

IGFBP5 Antibody - Protein Information**Name** IGFBP5**Synonyms** IBP5**Function**

IGF-binding proteins prolong the half-life of the IGFs and have been shown to either inhibit or stimulate the growth promoting effects of the IGFs on cell culture. They alter the interaction of IGFs with their cell surface receptors.

Cellular Location

Secreted.

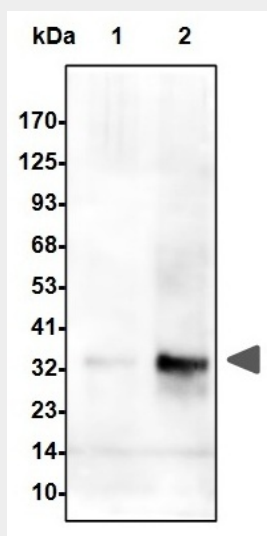
Tissue Location

Osteosarcoma, and at lower levels in liver, kidney and brain

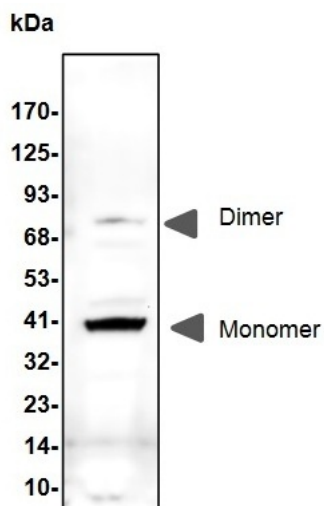
IGFBP5 Antibody - Protocols

Provided below are standard protocols that you may find useful for product applications.

- [Western Blot](#)
- [Blocking Peptides](#)
- [Dot Blot](#)
- [Immunohistochemistry](#)
- [Immunofluorescence](#)
- [Immunoprecipitation](#)
- [Flow Cytometry](#)
- [Cell Culture](#)

IGFBP5 Antibody - Images

Western blot analysis of anti-IGFBP5 pAb using recombinant human IGFBP5. lane1: 10ng; lane2: 50ng.



Western blot analysis of anti-IGFBP5 pAb in rat kidney lysate. Both monomer and dimer forms of IGFBP5 were detected.

IGFBP5 Antibody - Background

IGF-binding proteins prolong the half-life of the IGFs and have been shown to either inhibit or stimulate the growth promoting effects of the IGFs on cell culture. They alter the interaction of IGFs with their cell surface receptors.