

AGR2 Antibody
Purified Rabbit Polyclonal Antibody
Catalog # ABV11667**Specification**

AGR2 Antibody - Product Information

Application	WB, IF
Primary Accession	O95994
Reactivity	Human
Host	Rabbit
Clonality	Polyclonal
Isotype	Rabbit IgG
Calculated MW	19979

AGR2 Antibody - Additional Information**Gene ID** 10551**Other Names**

Anterior gradient protein 2 homolog, AG-2, hAG-2, HPC8, Secreted cement gland protein XAG-2 homolog, AGR2, UNQ515/PRO1030

Target/Specificity

AGR2

Formulation

100 µl antibody supplied in PBS with 0.09% (W/V) sodium azide.

Handling

The antibody solution should be gently mixed before use.

Background Descriptions**Precautions**

AGR2 Antibody is for research use only and not for use in diagnostic or therapeutic procedures.

AGR2 Antibody - Protein Information**Name** AGR2**Synonyms** AG2**Function**

Required for MUC2 post-transcriptional synthesis and secretion. May play a role in the production of mucus by intestinal cells (By similarity). Proto-oncogene that may play a role in cell migration, cell differentiation and cell growth. Promotes cell adhesion (PubMed:23274113).

Cellular Location

Secreted. Endoplasmic reticulum {ECO:0000250|UniProtKB:O88312}

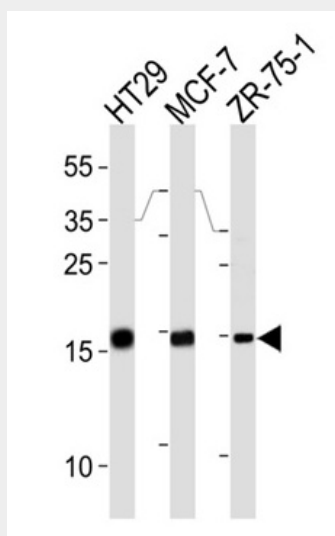
Tissue Location

Expressed strongly in trachea, lung, stomach, colon, prostate and small intestine. Expressed weakly in pituitary gland, salivary gland, mammary gland, bladder, appendix, ovary, fetal lung, uterus, pancreas, kidney, fetal kidney, testis, placenta, thyroid gland and in estrogen receptor (ER)-positive breast cancer cell lines

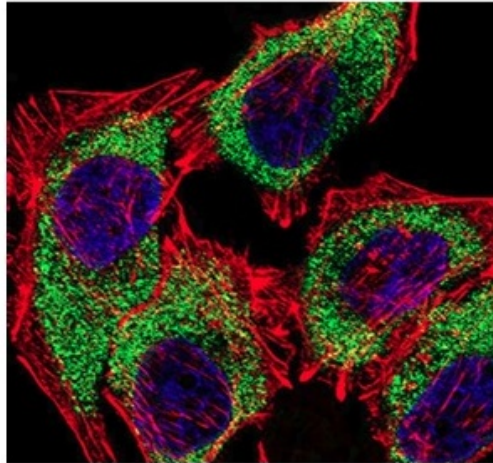
AGR2 Antibody - Protocols

Provided below are standard protocols that you may find useful for product applications.

- [Western Blot](#)
- [Blocking Peptides](#)
- [Dot Blot](#)
- [Immunohistochemistry](#)
- [Immunofluorescence](#)
- [Immunoprecipitation](#)
- [Flow Cytometry](#)
- [Cell Culture](#)

AGR2 Antibody - Images

Western blot analysis in HT29, MCF-7, ZR-751 cell lysates.



Fluorescent confocal image of A549 cell stained with AGR2 Antibody (green). Cytoplasmic actin and Nuclei were stained in red and blue. AGR2 immunoreactivity is localized to Cytoplasm.

AGR2 Antibody - Background

Required for MUC2 post-transcriptional synthesis and secretion. May play a role in the production of mucus by intestinal cells. Proto-oncogene that may play a role in cell migration, cell differentiation and cell growth. Expressed strongly in trachea, lung, stomach, colon, prostate and small intestine. Expressed weakly in pituitary gland, salivary gland, mammary gland, bladder, appendix, ovary, fetal lung, uterus, pancreas, kidney, fetal kidney, testis, placenta, thyroid gland and in estrogen receptor (ER)-positive breast cancer cell lines.