

Phospho-Bad (Ser136) antibody
Purified Rabbit Polyclonal Antibody
Catalog # ABV11678**Specification**

Phospho-Bad (Ser136) antibody - Product Information

Application	WB
Primary Accession	O92934
Other Accession	O61337 (Mouse) , O35147 (Rat)
Reactivity	Human, Mouse, Rat
Host	Rabbit
Clonality	Polyclonal
Isotype	Rabbit IgG
Calculated MW	18392

Phospho-Bad (Ser136) antibody - Additional Information**Gene ID** 572**Other Names**

BAD; BBC6; BCL2L8; Bcl2 antagonist of cell death; BAD; Bcl-2-binding component 6; Bcl-2-like protein 8; Bcl2-L-8; Bcl-XL/Bcl-2-associated death promoter

Target/Specificity

Bad (Ser136)

Formulation

100 ug (1mg/ml) of antibody in PBS containing 50% glycerol, 0.5% BSA and 0.02% sodium azide

Handling

The antibody solution should be gently mixed before use

Background Descriptions**Precautions**

Phospho-Bad (Ser136) antibody is for research use only and not for use in diagnostic or therapeutic procedures.

Phospho-Bad (Ser136) antibody - Protein Information**Name** BAD**Synonyms** BBC6, BCL2L8**Function**

Promotes cell death. Successfully competes for the binding to Bcl-X(L), Bcl-2 and Bcl-W, thereby affecting the level of heterodimerization of these proteins with BAX. Can reverse the death

repressor activity of Bcl-X(L), but not that of Bcl-2 (By similarity). Appears to act as a link between growth factor receptor signaling and the apoptotic pathways.

Cellular Location

Mitochondrion outer membrane. Cytoplasm {ECO:0000250|UniProtKB:Q61337}. Note=Colocalizes with HIF3A in the cytoplasm (By similarity). Upon phosphorylation, locates to the cytoplasm. {ECO:0000250|UniProtKB:Q61337}

Tissue Location

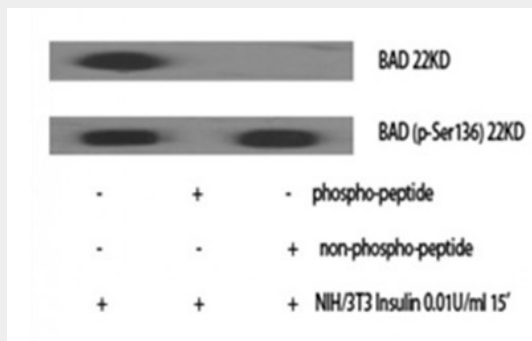
Expressed in a wide variety of tissues.

Phospho-Bad (Ser136) antibody - Protocols

Provided below are standard protocols that you may find useful for product applications.

- [Western Blot](#)
- [Blocking Peptides](#)
- [Dot Blot](#)
- [Immunohistochemistry](#)
- [Immunofluorescence](#)
- [Immunoprecipitation](#)
- [Flow Cytometry](#)
- [Cell Culture](#)

Phospho-Bad (Ser136) antibody - Images



Western blot analysis of NIH/3T3 cells using Phospho-Bad(Ser136) Polyclonal antibody.

Phospho-Bad (Ser136) antibody - Background

Bad is a member of the Bcl-2 family protein that selectively dimerize with Bcl-xL and Bcl-2 resulting in cell death. Survival factors such as IL-3 can inhibit the apoptotic activity of Bad by activating intracellular signaling pathways that result in the phosphorylation of Bad at Ser112 and Ser 136. Phosphorylation at these sites results in the binding of Bad to 14-3-3 proteins and the inhibition of Bad binding to Bcl-xL and Bcl-2. Recently, Akt has also been shown to promote cell survival via its ability to phosphorylate Bad at Ser136.