

Anti-human Alix Antibody
Purified Mouse Monoclonal Antibody
Catalog # ABV11686**Specification**

Anti-human Alix Antibody - Product Information

Application	WB, IF
Reactivity	Human
Host	Mouse
Clonality	Monoclonal
Isotype	Mouse IgG1

Anti-human Alix Antibody - Additional Information**Other Names**

ALG2 interacting protein; PDCD6-interacting protein

Target/Specificity

Alix (unconjugated)

Formulation

0.2 mg/ml in phosphate buffered saline (PBS) with sodium azide (15 mM), Approx. pH 7.4.

Handling

The antibody solution should be gently mixed before use

Background Descriptions**Precautions**

Anti-human Alix Antibody is for research use only and not for use in diagnostic or therapeutic procedures.

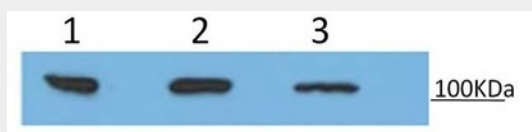
Anti-human Alix Antibody - Protein Information**Anti-human Alix Antibody - Protocols**

Provided below are standard protocols that you may find useful for product applications.

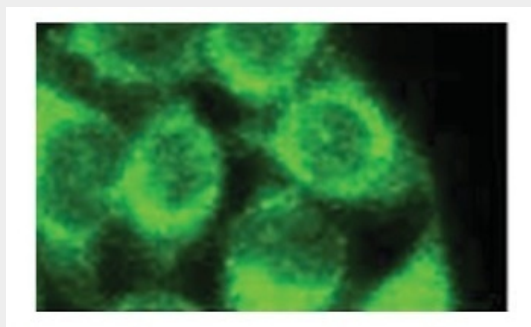
- [Western Blot](#)
- [Blocking Peptides](#)
- [Dot Blot](#)
- [Immunohistochemistry](#)
- [Immunofluorescence](#)
- [Immunoprecipitation](#)
- [Flow Cytometry](#)

- [Cell Culture](#)

Anti-human Alix Antibody - Images



Detection of Alix by Western blot. 1.MM1 lysate(20ug); 2.MM1 cells purified exosomes(20ug); 3. Plasma healthy donors purified exosomes(20ug).



Immunofluorescence staining of Hela cells.

Anti-human Alix Antibody - Background

Alix protein, named also ALG2 interacting protein or PDCD6-interacting protein, is a cytoplasmic protein that interacts with apoptosis associated-proteins. Alix plays an active role in exosome biogenesis and it is a useful internal marker for the analysis of exosomal proteins with western blotting.