

**Anti-human Flotillin antibody**  
**Purified Rabbit Polyclonal Antibody**  
**Catalog # ABV11688****Specification**

---

**Anti-human Flotillin antibody - Product Information**

Application	E, FC
Primary Accession	<a href="#">O75955</a>
Reactivity	Human
Host	Rabbit
Clonality	Polyclonal
Isotype	Rabbit IgG
Calculated MW	47355

**Anti-human Flotillin antibody - Additional Information****Gene ID** 10211**Other Names**

Flotillin-1, FLOT1

**Target/Specificity**

Flotilin (unconjugated)

**Formulation**

0.2 mg/ml in phosphate buffered saline (PBS) with sodium azide (15 mM), Approx. pH 7.4.

**Handling**

The antibody solution should be gently mixed before use

**Background Descriptions****Precautions**

Anti-human Flotillin antibody is for research use only and not for use in diagnostic or therapeutic procedures.

**Anti-human Flotillin antibody - Protein Information****Name** FLOT1**Function**

May act as a scaffolding protein within caveolar membranes, functionally participating in formation of caveolae or caveolae-like vesicles.

**Cellular Location**

Cell membrane; Peripheral membrane protein. Endosome Membrane, caveola {ECO:0000250|UniProtKB:O08917}; Peripheral membrane protein

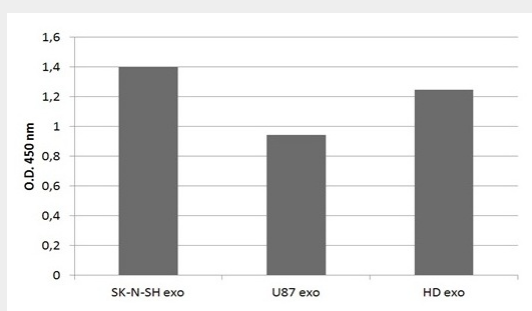
{ECO:0000250|UniProtKB:O08917}. Melanosome. Membrane raft. Note=Identified by mass spectrometry in melanosome fractions from stage I to stage IV (PubMed:17081065)  
Membrane-associated protein of caveola (By similarity) {ECO:0000250|UniProtKB:O08917, ECO:0000269|PubMed:17081065}

## Anti-human Flotillin antibody - Protocols

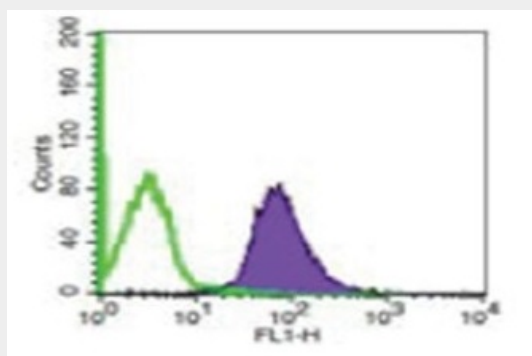
Provided below are standard protocols that you may find useful for product applications.

- [Western Blot](#)
- [Blocking Peptides](#)
- [Dot Blot](#)
- [Immunohistochemistry](#)
- [Immunofluorescence](#)
- [Immunoprecipitation](#)
- [Flow Cytometry](#)
- [Cell Culture](#)

## Anti-human Flotillin antibody - Images



Detection of different exosomes purified from cell culture supernatant or human plasma.



Purified exosomes from MM1(30ug) stained by anti-Flotillin antibody.

## Anti-human Flotillin antibody - Background

Flotillin belongs to the band 7.2/stomatin protein family and appears to be strongly expressed in muscle cells and fibroblasts. Flotillin expression is also correlated with Alzheimer development. Flotillin is highly expressed on exosomes and appears to be involved in exosome release. It is considered a common marker for exosomes analyses.