

**Anti-human TM9SF3 antibody**  
**Purified Rabbit Polyclonal Antibody**  
**Catalog # ABV11691****Specification**

---

**Anti-human TM9SF3 antibody - Product Information**

Application	E, WB
Primary Accession	<a href="#">Q9HD45</a>
Reactivity	Human
Host	Rabbit
Clonality	Polyclonal
Isotype	Rabbit IgG
Calculated MW	67888

**Anti-human TM9SF3 antibody - Additional Information****Gene ID** 56889**Other Names**

Transmembrane 9 superfamily member 3, EP70-P-iso, SM-11044-binding protein, TM9SF3, SMBP

**Target/Specificity**

TM9SF3 (unconjugated)

**Formulation**

0.5 mg/ml in Glycine (0.1 M), NaCl (0.5 M), Tris-HCl (0.1 M), Sodium Azide (15 mM), pH: 7.4.

**Handling**

The antibody solution should be gently mixed before use

**Background Descriptions****Precautions**

Anti-human TM9SF3 antibody is for research use only and not for use in diagnostic or therapeutic procedures.

**Anti-human TM9SF3 antibody - Protein Information****Name** TM9SF3**Synonyms** SMBP**Cellular Location**

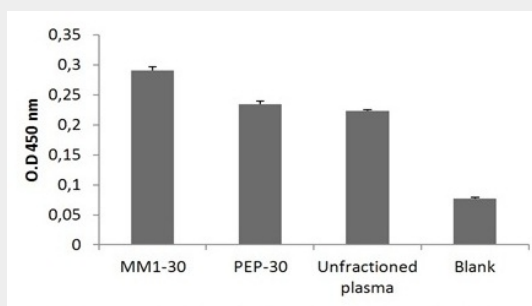
Membrane; Multi-pass membrane protein

## Anti-human TM9SF3 antibody - Protocols

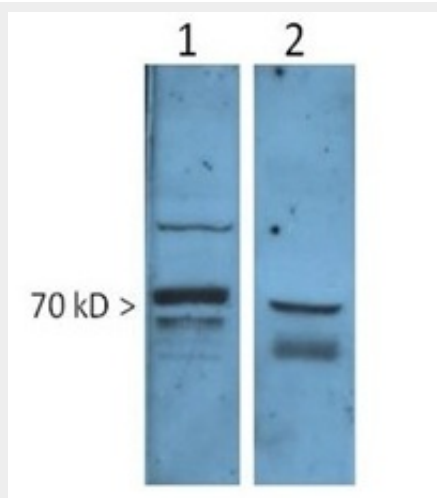
Provided below are standard protocols that you may find useful for product applications.

- [Western Blot](#)
- [Blocking Peptides](#)
- [Dot Blot](#)
- [Immunohistochemistry](#)
- [Immunofluorescence](#)
- [Immunoprecipitation](#)
- [Flow Cytometry](#)
- [Cell Culture](#)

## Anti-human TM9SF3 antibody - Images



Detection of TM9SF3 by Elisa.



Detection of TM9SF3 by Western blot. 1.MM1 cell lines(20ug); 2.MM1 derived exosome(20ug).

## Anti-human TM9SF3 antibody - Background

TM9SF3 belong to nonaspanins family proteins (TM9SF), characterized by a large non-cytoplasmic domain and nine putative transmembrane domains. Although little is known about the functions of this protein, it seems to participate in tumor invasion and might be considered as a potential prognostic factor. Protein is expressed on plasma membrane of cell and exosomes.