

SMO Antibody (Center)
Rabbit Polyclonal Antibody
Catalog # ABV11768**Specification**

SMO Antibody (Center) - Product Information

Application	WB
Primary Accession	Q99835
Reactivity	Human
Host	Rabbit
Clonality	Polyclonal
Isotype	Rabbit IgG
Calculated MW	86397

SMO Antibody (Center) - Additional Information**Gene ID** 6608

Positive Control	Western blot
Application & Usage	WB: 1:1000
Alias Symbol	SMO

Other Names

SMO Antibody (Center) polyclonal antibody, SMO antibody, Smoothened homolog antibody, SMO antibody, SMO polyclonal antibody, SMOH antibody

Appearance

Colourless liquid

Formulation

100 µg (0.5 mg/ml) of antibody in PBS with 0.09% (W/V) sodium azide.

Reconstitution & Storage

-20 °C

Background Descriptions**Precautions**

SMO Antibody (Center) is for research use only and not for use in diagnostic or therapeutic procedures.

SMO Antibody (Center) - Protein Information

Name SMO

Synonyms SMOH

Function

G protein-coupled receptor which associates with the patched protein (PTCH) to transduce hedgehog protein signaling. Binding of sonic hedgehog (SHH) to its receptor patched prevents inhibition of smoothened (SMO) by patched. When active, SMO binds to and sequesters protein kinase A catalytic subunit PRKACA at the cell membrane, preventing PRKACA-mediated phosphorylation of GLI transcription factors which releases the GLI proteins from PRKACA-mediated inhibition and allows for transcriptional activation of hedgehog pathway target genes (By similarity). Required for the accumulation of KIF7, GLI2 and GLI3 in the cilia (PubMed:19592253). Interacts with DLG5 at the ciliary base to induce the accumulation of KIF7 and GLI2 at the ciliary tip for GLI2 activation (By similarity).

Cellular Location

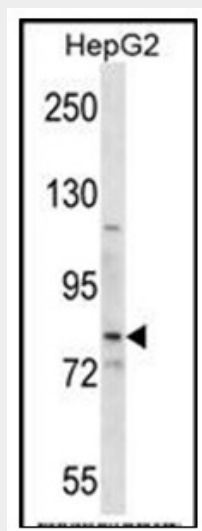
Cell membrane {ECO:0000250|UniProtKB:P56726}; Multi-pass membrane protein. Cell projection, cilium. Note=Cilium localization is promoted by SHH and is required for activity. {ECO:0000250|UniProtKB:P56726}

SMO Antibody (Center) - Protocols

Provided below are standard protocols that you may find useful for product applications.

- [Western Blot](#)
- [Blocking Peptides](#)
- [Dot Blot](#)
- [Immunohistochemistry](#)
- [Immunofluorescence](#)
- [Immunoprecipitation](#)
- [Flow Cytometry](#)
- [Cell Culture](#)

SMO Antibody (Center) - Images



Western blot analysis in HepG2 cell line Lysates using SMO purified antibody.

SMO Antibody (Center) - Background

The protein encoded by this gene is a G protein-coupled receptor that interacts with the patched protein, a receptor for hedgehog proteins. The encoded protein transduces signals to other proteins

after activation by a hedgehog protein/patched protein complex.