

C1 Esterase Inhibitor Antibody
Rabbit Polyclonal Antibody
Catalog # ABV11807**Specification**

C1 Esterase Inhibitor Antibody - Product Information

Application	WB
Primary Accession	P05155
Reactivity	Human
Host	Rabbit
Clonality	Polyclonal
Isotype	Rabbit IgG
Calculated MW	55154

C1 Esterase Inhibitor Antibody - Additional Information**Gene ID** 710

Positive Control	WB: h serum, h C1 Esterase Inhibitor
Application & Usage	WB: 1-4 µg
Alias Symbol	SERPING1

Other Names

Plasma protease C1 inhibitor, C1 Inh, C1Inh, C1 esterase inhibitor, C1-inhibiting factor, Serpin G1

Appearance

Colorless liquid

Formulation

In PBS pH 7.2, 0.01 % BSA, 0.03 % ProClin® and 50 % glycerol

Reconstitution & Storage

-20 °C

Background Descriptions**Precautions**

C1 Esterase Inhibitor Antibody is for research use only and not for use in diagnostic or therapeutic procedures.

C1 Esterase Inhibitor Antibody - Protein Information**Name** SERPING1**Synonyms** C1IN, C1NH**Function**

Activation of the C1 complex is under control of the C1- inhibitor. It forms a proteolytically inactive

stoichiometric complex with the C1r or C1s proteases. May play a potentially crucial role in regulating important physiological pathways including complement activation, blood coagulation, fibrinolysis and the generation of kinins. Very efficient inhibitor of FXIIa. Inhibits chymotrypsin and kallikrein.

Cellular Location

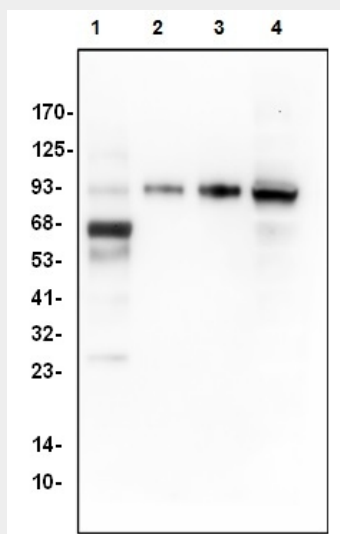
Secreted.

C1 Esterase Inhibitor Antibody - Protocols

Provided below are standard protocols that you may find useful for product applications.

- [Western Blot](#)
- [Blocking Peptides](#)
- [Dot Blot](#)
- [Immunohistochemistry](#)
- [Immunofluorescence](#)
- [Immunoprecipitation](#)
- [Flow Cytometry](#)
- [Cell Culture](#)

C1 Esterase Inhibitor Antibody - Images



Western blot with human C1 Esterase Inhibitor antibody in: Lane1: h serum(1 µg) Lane2-4: h C1 Esterase Inhibitor(2ng, 10ng, 50ng)

C1 Esterase Inhibitor Antibody - Background

A single chain glycoprotein which inhibits C1, C1r, C1s, plasma kallikrein, Factors XIa, XIIa, and plasmin. Present in plasma at 16-33 mg per 100 ml. C1 esterase inhibitor deficiency is a rare condition resulting in facial swelling and abdominal cramping. Usually the condition is hereditary, though it may also occur when the C1EI is non-functional. The C1 esterase inhibitor protein is a normal constituent of serum which functions as a serine proteinase inhibitor of the serpin family. The C1 esterase inhibitor inhibits the complement proteases C1r and C1s, as well as the proteases kallikrein, factor XIa, XIIa and plasmin of the blood clotting system. The concentration of C1 esterase inhibitor protein is reduced to 10-30% of normal in patients with angioedema secondary to C1 esterase inhibitor deficiency (85% of patients with Hereditary Angioedema (HAE)); in 15% of

patients with HAE, the concentrations of the inhibitor protein is normal but function is markedly reduced.