

Nephrin Antibody
Rabbit Polyclonal Antibody
Catalog # ABV11844**Specification**

Nephrin Antibody - Product Information

Application	IHC
Primary Accession	O60500
Reactivity	Human, Mouse, Rat
Host	Rabbit
Clonality	Polyclonal
Isotype	Rabbit IgG
Calculated MW	134742

Nephrin Antibody - Additional Information**Gene ID** 4868

Positive Control	WB: HeLa, HEK293 and PC12 cell lysates; IHC: human brain sections
Application & Usage	WB; 1:500 - 1:2000, IH; 1:50 - 1:200
Alias Symbol	NPHS1
Other Names	
NPHN; Nephrin; Renal glomerulus-specific cell adhesion receptor	

Appearance
Colorless liquid

Formulation
In 0.42% Potassium phosphate; 0.87% Sodium chloride; pH 7.3; 30% glycerol and 0.01% sodium azide

Reconstitution & Storage
-20 °C**Background Descriptions**

Precautions
Nephrin Antibody is for research use only and not for use in diagnostic or therapeutic procedures.

Nephrin Antibody - Protein Information

Name NPHS1
Synonyms NPHN
Function

Seems to play a role in the development or function of the kidney glomerular filtration barrier. Regulates glomerular vascular permeability. May anchor the podocyte slit diaphragm to the actin cytoskeleton. Plays a role in skeletal muscle formation through regulation of myoblast fusion (By similarity).

Cellular Location

Cell membrane; Single-pass type I membrane protein. Note=Predominantly located at podocyte slit diaphragm between podocyte foot processes. Also associated with podocyte apical plasma membrane.

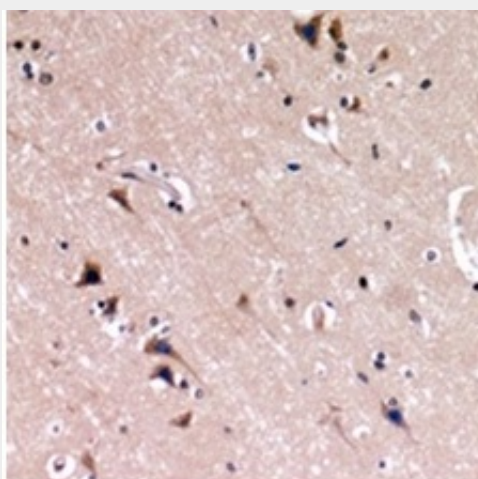
Tissue Location

Specifically expressed in podocytes of kidney glomeruli

Nephrin Antibody - Protocols

Provided below are standard protocols that you may find useful for product applications.

- [Western Blot](#)
- [Blocking Peptides](#)
- [Dot Blot](#)
- [Immunohistochemistry](#)
- [Immunofluorescence](#)
- [Immunoprecipitation](#)
- [Flow Cytometry](#)
- [Cell Culture](#)

Nephrin Antibody - Images

Immunohistochemical analysis of Nephrin staining in H.brain formalin fixed paraffin embedded tissue section.

Nephrin Antibody - Background

Seems to play a role in the development or function of the kidney glomerular filtration barrier. Regulates glomerular vascular permeability. May anchor the podocyte slit diaphragm to the actin cytoskeleton. Plays a role in skeletal muscle formation through regulation of myoblast fusion