

Anti-MYCBP Antibody
Catalog # ABV11930**Specification**

Anti-MYCBP Antibody - Product Information

| | |
|-------------------|------------------------|
| Application | IHC, WB |
| Primary Accession | Q99417 |
| Reactivity | Human, Mouse, Rat |
| Host | Rabbit |
| Isotype | Rabbit IgG |
| Calculated MW | 11967 |

Anti-MYCBP Antibody - Additional Information**Gene ID** 26292

| | |
|---------------------|--|
| Positive Control | WB: A549, rat lung cell lysate; IHC: human heart tissue |
| Application & Usage | WB; 1:500 - 1:2000, IHC; 1:50 - 1:200 |

Other Names

AMY1, C-Myc-binding protein, Associate of Myc 1, AMY-1

Target/Specificity

MYCBP

Antibody Form

Liquid

Appearance

Colorless liquid

Handling

The antibody solution should be gently mixed before use

Reconstitution & Storage

-20°C

Background Descriptions**Precautions**

Anti-MYCBP Antibody is for research use only and not for use in diagnostic or therapeutic procedures.

Anti-MYCBP Antibody - Protein Information**Name** MYCBP ([HGNC:7554](#))

Synonyms AMY1**Function**

May control the transcriptional activity of MYC. Stimulates the activation of E box-dependent transcription by MYC.

Cellular Location

Cytoplasm. Nucleus. Mitochondrion. Note=Translocates into the nucleus in the S phase of the cell cycle upon an increase of MYC expression. Found in the mitochondria when associated with AKAP1

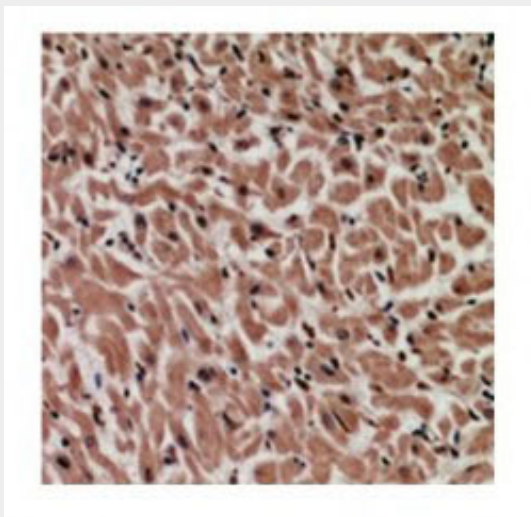
Tissue Location

Highly expressed in heart, placenta, pancreas, skeletal muscle and kidney. Also present at low levels in lung

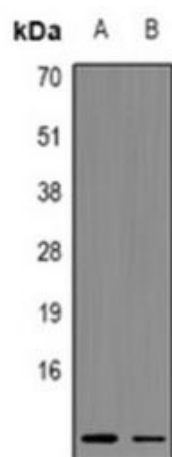
Anti-MYCBP Antibody - Protocols

Provided below are standard protocols that you may find useful for product applications.

- [Western Blot](#)
- [Blocking Peptides](#)
- [Dot Blot](#)
- [Immunohistochemistry](#)
- [Immunofluorescence](#)
- [Immunoprecipitation](#)
- [Flow Cytometry](#)
- [Cell Culture](#)

Anti-MYCBP Antibody - Images

Immunohistochemical analysis of MYCBP staining in human heart formalin fixed paraffin embedded tissue section



WB analysis of MYCBP expression in A549 (A); rat lung (B) whole cell lysates