

**Anti-MEF2A Antibody**  
**Catalog # ABV11942****Specification**

---

**Anti-MEF2A Antibody - Product Information**

Application	WB
Primary Accession	<a href="#">Q02078</a>
Reactivity	Human, Mouse, Rat
Host	Rabbit
Isotype	Rabbit IgG
Calculated MW	54811

**Anti-MEF2A Antibody - Additional Information****Gene ID** 4205

Positive Control	WB; HEK293T, mouse muscle, rat muscle cell lysates
Application & Usage	WB; 1:500 - 1:2000

**Other Names**

MEF2; Myocyte-specific enhancer factor 2A; Serum response factor-like protein 1

**Target/Specificity**

MEF2A

**Antibody Form**

Liquid

**Appearance**

Colorless liquid

**Handling**

The antibody solution should be gently mixed before use

**Reconstitution & Storage**

-20°C

**Background Descriptions****Precautions**

Anti-MEF2A Antibody is for research use only and not for use in diagnostic or therapeutic procedures.

**Anti-MEF2A Antibody - Protein Information****Name** MEF2A

## Synonyms MEF2

### Function

Transcriptional activator which binds specifically to the MEF2 element, 5'-YTA[AT](4)TAR-3', found in numerous muscle-specific genes. Also involved in the activation of numerous growth factor- and stress-induced genes. Mediates cellular functions not only in skeletal and cardiac muscle development, but also in neuronal differentiation and survival. Plays diverse roles in the control of cell growth, survival and apoptosis via p38 MAPK signaling in muscle-specific and/or growth factor-related transcription. In cerebellar granule neurons, phosphorylated and sumoylated MEF2A represses transcription of NUR77 promoting synaptic differentiation. Associates with chromatin to the ZNF16 promoter.

### Cellular Location

Nucleus {ECO:0000255|PROSITE-ProRule:PRU00251, ECO:0000269|PubMed:12691662, ECO:0000269|PubMed:16563226}

### Tissue Location

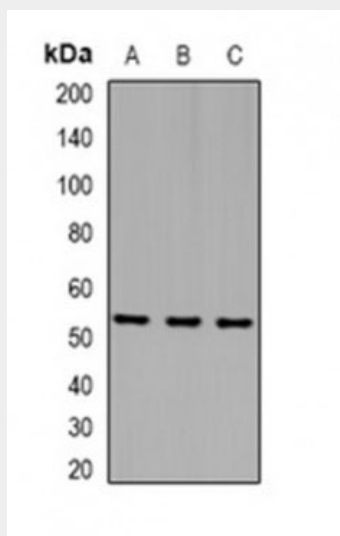
Isoform MEF2 and isoform MEFA are expressed only in skeletal and cardiac muscle and in the brain. Isoform RSRFC4 and isoform RSRFC9 are expressed in all tissues examined

## Anti-MEF2A Antibody - Protocols

Provided below are standard protocols that you may find useful for product applications.

- [Western Blot](#)
- [Blocking Peptides](#)
- [Dot Blot](#)
- [Immunohistochemistry](#)
- [Immunofluorescence](#)
- [Immunoprecipitation](#)
- [Flow Cytometry](#)
- [Cell Culture](#)

## Anti-MEF2A Antibody - Images



WB analysis of MEF2A (AcK403) expression in HEK293T (A): mouse muscle (B): rat muscle (C) whole cell lysates