

RASSF1A Antibody
Catalog # ABV11952**Specification**

RASSF1A Antibody - Product Information

Application	WB, IHC
Primary Accession	Q9NS23
Reactivity	Human, Mouse
Host	Mouse
Isotype	Mouse IgM κ
Calculated MW	39219

RASSF1A Antibody - Additional Information**Gene ID** 11186

Positive Control	WB; HCT116, ModeK, 4T1 cell lysate, mouse colon tissue, IH: mouse and human colon tissue
Application & Usage	WB- 1:50, IHC- 1:50, IP- 1.5 µg

Other Names

Ras association domain-containing protein 1, 123F2, NORE2A, RASSF1, RDA32, REH3P21

Target/Specificity

RASSF1

Antibody Form

Liquid

Appearance

Colorless liquid

Handling

The antibody solution should be gently mixed before use

Reconstitution & Storage

-20°C

Background Descriptions**Precautions**

RASSF1A Antibody is for research use only and not for use in diagnostic or therapeutic procedures.

RASSF1A Antibody - Protein Information**Name** RASSF1 {ECO:0000312|EMBL:AAF35128.2}

Function

Potential tumor suppressor. Required for death receptor- dependent apoptosis. Mediates activation of STK3/MST2 and STK4/MST1 during Fas-induced apoptosis by preventing their dephosphorylation. When associated with MOAP1, promotes BAX conformational change and translocation to mitochondrial membranes in response to TNF and TNFSF10 stimulation. Isoform A interacts with CDC20, an activator of the anaphase-promoting complex, APC, resulting in the inhibition of APC activity and mitotic progression. Inhibits proliferation by negatively regulating cell cycle progression at the level of G1/S-phase transition by regulating accumulation of cyclin D1 protein. Isoform C has been shown not to perform these roles, no function has been identified for this isoform. Isoform A disrupts interactions among MDM2, DAXX and USP7, thus contributing to the efficient activation of TP53 by promoting MDM2 self-ubiquitination in cell-cycle checkpoint control in response to DNA damage.

Cellular Location

[Isoform A]: Cytoplasm, cytoskeleton. Cytoplasm, cytoskeleton, microtubule organizing center, centrosome. Cytoplasm, cytoskeleton, spindle. Cytoplasm, cytoskeleton, spindle pole. Nucleus
Note=Localizes to cytoplasmic microtubules during interphase, to bipolar centrosomes associated with microtubules during prophase, to spindle fibers and spindle poles at metaphase and anaphase, to the midzone during early telophase, and to the midbody in late telophase in cells. Colocalizes with MDM2 in the nucleus

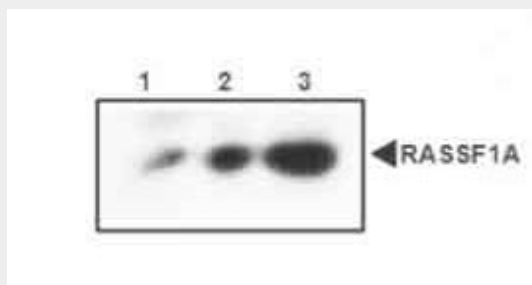
Tissue Location

Isoform A and isoform C are ubiquitously expressed in all tissues tested, however isoform A is absent in many corresponding cancer cell lines. Isoform B is mainly expressed in hematopoietic cells.

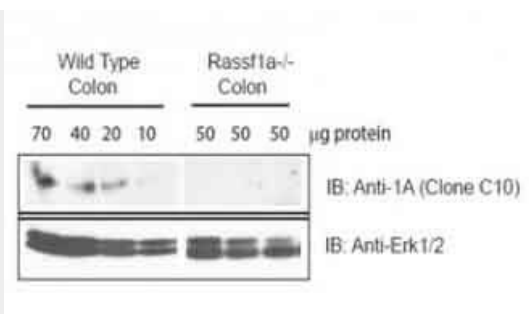
RASSF1A Antibody - Protocols

Provided below are standard protocols that you may find useful for product applications.

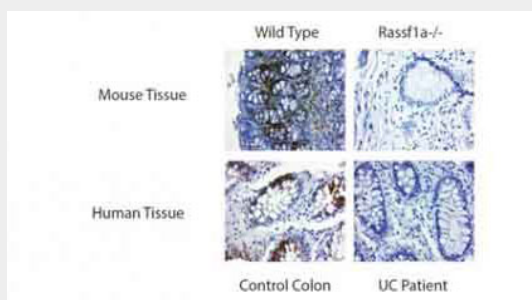
- [Western Blot](#)
- [Blocking Peptides](#)
- [Dot Blot](#)
- [Immunohistochemistry](#)
- [Immunofluorescence](#)
- [Immunoprecipitation](#)
- [Flow Cytometry](#)
- [Cell Culture](#)

RASSF1A Antibody - Images

WB analysis of RASSF1A Antibody in: Lane 1:HCT116 cell lysate Lane 2: ModeK cell lysate Lane 3: 4T1 cell lysate



WB detection of endogenous RASSF1A in mouse colon tissues from a wild type colon tissue sample (decreasing amounts shown) and from three independently isolated RASSF1A^{-/-} knockout colon tissues using RASSF1A antibody



Analysis of RASSF1A immunostaining in mouse and human colon tissues via immunohistochemical analysis using RASSF1A antibody