

Anti-EP-CAM Antibody
Catalog # ABV11974**Specification**

Anti-EP-CAM Antibody - Product Information

Application	WB
Primary Accession	P16422
Reactivity	Human
Host	Rabbit
Isotype	Rabbit IgG
Calculated MW	34932

Anti-EP-CAM Antibody - Additional Information**Gene ID 4072**

Positive Control	WB: 3T3 lysate
Application & Usage	WB 1:500-1:2000; E 1:5000-1:20000; IHC 1:100-1:300

Other Names

CD326, EPCAM; GA733-2; M1S2; M4S1; MIC18; TACSTD1; TROP1; Epithelial cell adhesion molecule; Ep-CAM; Adenocarcinoma-associated antigen; Cell surface glycoprotein Trop-1; Epithelial cell surface antigen; Epithelial glycoprotein; EGP; Epithelial gly

Target/Specificity

EPCAM

Antibody Form

Liquid

Appearance

Colorless liquid

Handling

The antibody solution should be gently mixed before use

Reconstitution & Storage

-20°C

Background Descriptions**Precautions**

Anti-EP-CAM Antibody is for research use only and not for use in diagnostic or therapeutic procedures.

Anti-EP-CAM Antibody - Protein Information

Name EPCAM

Synonyms GA733-2, M1S2, M4S1, MIC18, TACSTD1, TRO

Function

May act as a physical homophilic interaction molecule between intestinal epithelial cells (IECs) and intraepithelial lymphocytes (IELs) at the mucosal epithelium for providing immunological barrier as a first line of defense against mucosal infection. Plays a role in embryonic stem cells proliferation and differentiation. Up-regulates the expression of FABP5, MYC and cyclins A and E.

Cellular Location

Lateral cell membrane; Single-pass type I membrane protein. Cell junction, tight junction.
Note=Colocalizes with CLDN7 at the lateral cell membrane and tight junction

Tissue Location

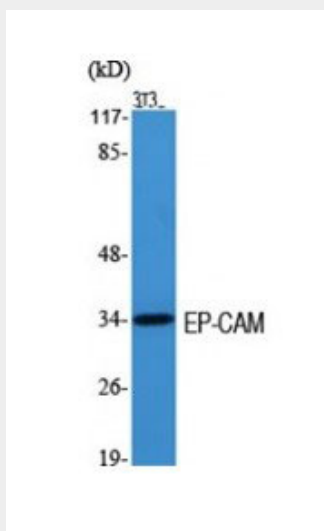
Highly and selectively expressed by undifferentiated rather than differentiated embryonic stem cells (ESC) Levels rapidly diminish as soon as ESC's differentiate (at protein levels). Expressed in almost all epithelial cell membranes but not on mesodermal or neural cell membranes. Found on the surface of adenocarcinoma.

Anti-EP-CAM Antibody - Protocols

Provided below are standard protocols that you may find useful for product applications.

- [Western Blot](#)
- [Blocking Peptides](#)
- [Dot Blot](#)
- [Immunohistochemistry](#)
- [Immunofluorescence](#)
- [Immunoprecipitation](#)
- [Flow Cytometry](#)
- [Cell Culture](#)

Anti-EP-CAM Antibody - Images



WB (WB) analysis of 3T3 cells using EP-CAM Polyclonal Antibody.