

Phospho-Cofilin (Ser3) Antibody
Catalog # ABV11998**Specification**

Phospho-Cofilin (Ser3) Antibody - Product Information

Application	WB
Primary Accession	P23528
Reactivity	Human, Mouse, Rat
Host	Rabbit
Isotype	Rabbit IgG
Calculated MW	18502

Phospho-Cofilin (Ser3) Antibody - Additional Information**Gene ID** 1072

Positive Control	WB: COLO205 cell lysate
Application & Usage	WB 1:500-1:2000; IHC 1:100-1:300; E 1:10000

Other Names

Cofilin-1, 18 kDa phosphoprotein, p18, Cofilin, non-muscle isoform, CFL1, CFL

Target/Specificity

CFL1

Antibody Form

Liquid

Appearance

Colorless liquid

Handling

The antibody solution should be gently mixed before use

Reconstitution & Storage

-20°C

Background Descriptions**Precautions**

Phospho-Cofilin (Ser3) Antibody is for research use only and not for use in diagnostic or therapeutic procedures.

Phospho-Cofilin (Ser3) Antibody - Protein Information**Name** CFL1

Synonyms CFL

Function

Binds to F-actin and exhibits pH-sensitive F-actin depolymerizing activity (PubMed:11812157). In conjunction with the subcortical maternal complex (SCMC), plays an essential role for zygotes to progress beyond the first embryonic cell divisions via regulation of actin dynamics (PubMed:15580268). Required for the centralization of the mitotic spindle and symmetric division of zygotes (By similarity). Plays a role in the regulation of cell morphology and cytoskeletal organization in epithelial cells (PubMed:21834987). Required for the up-regulation of atypical chemokine receptor ACKR2 from endosomal compartment to cell membrane, increasing its efficiency in chemokine uptake and degradation (PubMed:23633677). Required for neural tube morphogenesis and neural crest cell migration (By similarity).

Cellular Location

Nucleus matrix. Cytoplasm, cytoskeleton. Cell projection, ruffle membrane; Peripheral membrane protein; Cytoplasmic side. Cell projection, lamellipodium membrane; Peripheral membrane protein; Cytoplasmic side. Cell projection, lamellipodium {ECO:0000250|UniProtKB:P18760}. Cell projection, growth cone {ECO:0000250|UniProtKB:P18760}. Cell projection, axon {ECO:0000250|UniProtKB:P18760}. Note=Colocalizes with the actin cytoskeleton in membrane ruffles and lamellipodia. Detected at the cleavage furrow and contractile ring during cytokinesis. Almost completely in nucleus in cells exposed to heat shock or 10% dimethyl sulfoxide

Tissue Location

Widely distributed in various tissues.

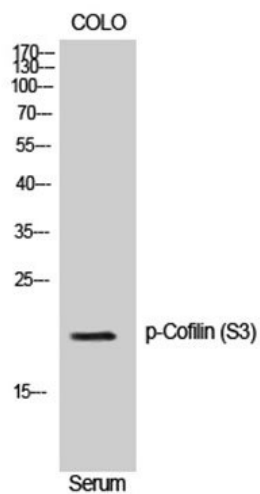
Phospho-Cofilin (Ser3) Antibody - Protocols

Provided below are standard protocols that you may find useful for product applications.

- [Western Blot](#)
- [Blocking Peptides](#)
- [Dot Blot](#)
- [Immunohistochemistry](#)
- [Immunofluorescence](#)
- [Immunoprecipitation](#)
- [Flow Cytometry](#)
- [Cell Culture](#)

Phospho-Cofilin (Ser3) Antibody - Images





WB analysis of COLO205 cells using Phospho-Cofilin (S3) Polyclonal Antibody.