

Phospho-Connexin 43 (Ser368) Antibody
Catalog # ABV11999**Specification**

Phospho-Connexin 43 (Ser368) Antibody - Product Information

Application	WB
Primary Accession	P17302
Reactivity	Human, Mouse, Rat
Host	Rabbit
Isotype	Rabbit IgG
Calculated MW	43008

Phospho-Connexin 43 (Ser368) Antibody - Additional Information**Gene ID** 2697

Positive Control	WB: HuvEc cell lysate
Application & Usage	WB 1:500-1:2000; IHC 1:100-1:300; E 1:20000

Other Names

Gap junction alpha-1 protein, Connexin-43, Cx43, Gap junction 43 kDa heart protein, GJA1, GJAL

Target/Specificity

GJA1

Antibody Form

Liquid

Appearance

Colorless liquid

Handling

The antibody solution should be gently mixed before use

Reconstitution & Storage

-20°C

Background Descriptions**Precautions**

Phospho-Connexin 43 (Ser368) Antibody is for research use only and not for use in diagnostic or therapeutic procedures.

Phospho-Connexin 43 (Ser368) Antibody - Protein Information**Name** GJA1

Synonyms GJAL

Function

Gap junction protein that acts as a regulator of bladder capacity. A gap junction consists of a cluster of closely packed pairs of transmembrane channels, the connexons, through which materials of low MW diffuse from one cell to a neighboring cell. May play a critical role in the physiology of hearing by participating in the recycling of potassium to the cochlear endolymph. Negative regulator of bladder functional capacity: acts by enhancing intercellular electrical and chemical transmission, thus sensitizing bladder muscles to cholinergic neural stimuli and causing them to contract (By similarity). May play a role in cell growth inhibition through the regulation of NOV expression and localization. Plays an essential role in gap junction communication in the ventricles (By similarity).

Cellular Location

Cell membrane; Multi-pass membrane protein. Cell junction, gap junction. Endoplasmic reticulum {ECO:0000250|UniProtKB:P23242}. Note=Localizes at the intercalated disk (ICD) in cardiomyocytes and the proper localization at ICD is dependent on TMEM65. {ECO:0000250|UniProtKB:P23242}

Tissue Location

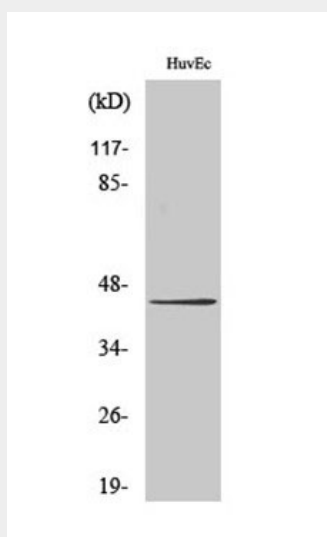
Expressed in the heart and fetal cochlea.

Phospho-Connexin 43 (Ser368) Antibody - Protocols

Provided below are standard protocols that you may find useful for product applications.

- [Western Blot](#)
- [Blocking Peptides](#)
- [Dot Blot](#)
- [Immunohistochemistry](#)
- [Immunofluorescence](#)
- [Immunoprecipitation](#)
- [Flow Cytometry](#)
- [Cell Culture](#)

Phospho-Connexin 43 (Ser368) Antibody - Images



WB analysis of HuvEc cells using Phospho-Connexin 43 (S368) Polyclonal Antibody