

**IRS-1 Antibody (S639)**  
**Purified Rabbit Polyclonal Antibody (Pab)**  
**Catalog # AE1018b****Specification**

---

**IRS-1 Antibody (S639) - Product Information**

Application	WB, IF
Primary Accession	<a href="#">P35568</a>
Reactivity	Human, Mouse, Rat
Host	Rabbit
Clonality	Polyclonal
Concentration	1mg/ml
Isotype	Rabbit IgG
Calculated MW	131591

**IRS-1 Antibody (S639) - Additional Information****Gene ID** 3667**Other Names**

Insulin receptor substrate 1, IRS-1, IRS1

**Target/Specificity**

The antibody was affinity-purified from rabbit antiserum by affinity-chromatography using epitope-specific immunogen.

**Dilution**

WB~~1:500~1:1000

IF~~1:100~200

**Format**

affinity Purified IgG, in PBS, 0.02% sodium azide and 50% glycerol.

**Storage**

Maintain refrigerated at 2-8°C for up to 6 months. For long term storage store at -20°C in small aliquots to prevent freeze-thaw cycles.

**Precautions**

IRS-1 Antibody (S639) is for research use only and not for use in diagnostic or therapeutic procedures.

**IRS-1 Antibody (S639) - Protein Information****Name** IRS1**Function**

May mediate the control of various cellular processes by insulin. When phosphorylated by the

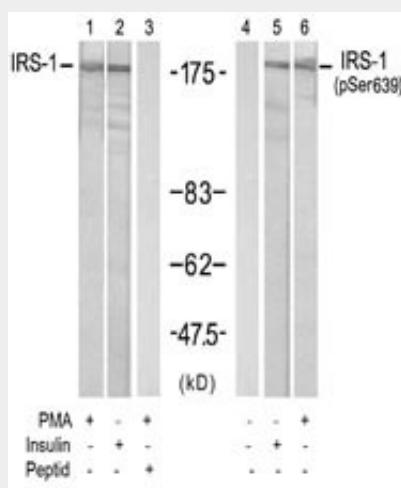
insulin receptor binds specifically to various cellular proteins containing SH2 domains such as phosphatidylinositol 3-kinase p85 subunit or GRB2. Activates phosphatidylinositol 3-kinase when bound to the regulatory p85 subunit (By similarity).

### IRS-1 Antibody (S639) - Protocols

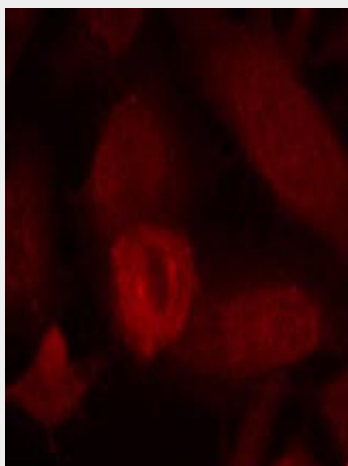
Provided below are standard protocols that you may find useful for product applications.

- [Western Blot](#)
- [Blocking Peptides](#)
- [Dot Blot](#)
- [Immunohistochemistry](#)
- [Immunofluorescence](#)
- [Immunoprecipitation](#)
- [Flow Cytometry](#)
- [Cell Culture](#)

### IRS-1 Antibody (S639) - Images



Western blot analysis of extracts from 293 cells treated with PMA (100nM, 15min) or insulin(100nM, 30min) using IRS-1 Antibody (S639) (#AE1018b, Lane 1, 2 and 3) and Phospho-IRS-1-S639 Antibody (#AE1018d, Lane 4, 5 and 6).



Immunofluorescence staining of methanol-fixed HeLa cells using IRS-1 Antibody (S639) (#AE1018b, Red).

#### **IRS-1 Antibody (S639) - Background**

This gene encodes a protein which is phosphorylated by insulin receptor tyrosine kinase. Mutations in this gene are associated with type II diabetes and susceptibility to insulin resistance.

#### **IRS-1 Antibody (S639) - References**

COMMON VARIANTS IN 40 GENES ASSESSED FOR DIABETES INCIDENCE AND RESPONSE TO METFORMIN AND LIFESTYLE INTERVENTIONS IN THE DIABETES PREVENTION PROGRAM. Jablonski KA, et al. Diabetes, 2010 Aug 3. PMID 20682687.

A genetic association study of maternal and fetal candidate genes that predispose to preterm prelabor rupture of membranes (PROM). Romero R, et al. Am J Obstet Gynecol, 2010 Jul 29. PMID 20673868.

Comprehensive analysis of common genetic variation in 61 genes related to steroid hormone and insulin-like growth factor-I metabolism and breast cancer risk in the NCI breast and prostate cancer cohort consortium. Canzian F, et al. Hum Mol Genet, 2010 Oct 1. PMID 20634197.

Variation at the NFATC2 Locus Increases the Risk of Thiazolinedinedione-Induced Edema in the Diabetes REduction Assessment with ramipril and rosiglitazone Medication (DREAM) Study. Bailey SD, et al. Diabetes Care, 2010 Jul 13. PMID 20628086.

Physiogenomic analysis of statin-treated patients: domain-specific counter effects within the ACACB gene on low-density lipoprotein cholesterol? Ruaño G, et al. Pharmacogenomics, 2010 Jul. PMID 20602615.