

Goat Anti-ANILLIN / Scraps (C Terminus) Antibody
Peptide-affinity purified goat antibody
Catalog # AF1062a**Specification**

Goat Anti-ANILLIN / Scraps (C Terminus) Antibody - Product Information

Application	IHC
Primary Accession	O9NQW6
Other Accession	NP_061155 , 54443 , 68743 (mouse)
Reactivity	Human
Predicted	Mouse, Cow
Host	Goat
Clonality	Polyclonal
Concentration	100ug/200ul
Isotype	IgG
Calculated MW	124199

Goat Anti-ANILLIN / Scraps (C Terminus) Antibody - Additional Information**Gene ID** 54443**Other Names**

Actin-binding protein anillin, ANLN

Format

0.5 mg IgG/ml in Tris saline (20mM Tris pH7.3, 150mM NaCl), 0.02% sodium azide, with 0.5% bovine serum albumin

Storage

Maintain refrigerated at 2-8°C for up to 6 months. For long term storage store at -20°C in small aliquots to prevent freeze-thaw cycles.

Precautions

Goat Anti-ANILLIN / Scraps (C Terminus) Antibody is for research use only and not for use in diagnostic or therapeutic procedures.

Goat Anti-ANILLIN / Scraps (C Terminus) Antibody - Protein Information**Name** ANLN**Function**

Required for cytokinesis (PubMed:16040610). Essential for the structural integrity of the cleavage furrow and for completion of cleavage furrow ingression. Plays a role in bleb assembly during metaphase and anaphase of mitosis (PubMed:23870127). May play a significant role in podocyte cell migration (PubMed:24676636).

Cellular Location

Nucleus. Cytoplasm, cytoskeleton. Cytoplasm, cell cortex. Cell projection, bleb. Note=Mainly found in the nucleus during interphase. Colocalizes with cortical F-actin upon nuclear envelope breakdown in mitosis and subsequently concentrates in the area of the prospective contractile ring in anaphase. This pattern persists until telophase, when the protein becomes concentrated in the midbody

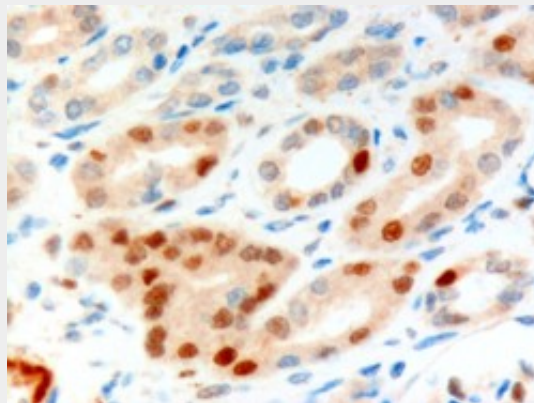
Tissue Location

Ubiquitously expressed. Present at highest levels in the brain, at high levels in the placenta and testis, at intermediate levels in the intestine, ovary, skeletal muscle and thymus and at lower levels in heart, kidney, liver, lung, pancreas, prostate and spleen. In the kidney, it is widely expressed in tubules, but sparsely expressed in the glomerulus (PubMed:24676636). Expression is significantly increased in renal biopsy specimens from idiopathic FSGS (PubMed:24676636). Overexpressed in many tumor types including breast, colorectal, endometrial, hepatic, kidney, lung, ovarian and pancreatic tumors.

Goat Anti-ANILLIN / Scraps (C Terminus) Antibody - Protocols

Provided below are standard protocols that you may find useful for product applications.

- [Western Blot](#)
- [Blocking Peptides](#)
- [Dot Blot](#)
- [Immunohistochemistry](#)
- [Immunofluorescence](#)
- [Immunoprecipitation](#)
- [Flow Cytometry](#)
- [Cell Culture](#)

Goat Anti-ANILLIN / Scraps (C Terminus) Antibody - Images

AF1062a (10 µg/ml) staining of paraffin embedded Human Kidney. Microwaved antigen retrieval with Tris/EDTA buffer pH9, HRP-staining.

Goat Anti-ANILLIN / Scraps (C Terminus) Antibody - References

NBL1 and anillin (ANLN) genes over-expression in pancreatic carcinoma. Olakowski M, et al. Folia Histochem Cytobiol, 2009. PMID 19995712.

Anillin is a scaffold protein that links RhoA, actin, and myosin during cytokinesis. Piekny AJ, et al. Curr Biol, 2008 Jan 8. PMID 18158243.

Systematic analysis of the protein interaction network for the human transcription machinery

reveals the identity of the 7SK capping enzyme. Jeronimo C, et al. Mol Cell, 2007 Jul 20. PMID 17643375.

Global, in vivo, and site-specific phosphorylation dynamics in signaling networks. Olsen JV, et al. Cell, 2006 Nov 3. PMID 17081983.

A probability-based approach for high-throughput protein phosphorylation analysis and site localization. Beausoleil SA, et al. Nat Biotechnol, 2006 Oct. PMID 16964243.