

Goat Anti-APOL1 Antibody
Peptide-affinity purified goat antibody
Catalog # AF1083a**Specification**

Goat Anti-APOL1 Antibody - Product Information

Application	WB
Primary Accession	O14791
Other Accession	NP_663318 , 8542
Reactivity	Human
Host	Goat
Clonality	Polyclonal
Concentration	100ug/200ul
Isotype	IgG
Calculated MW	43974

Goat Anti-APOL1 Antibody - Additional Information**Gene ID** 8542**Other Names**

Apolipoprotein L1, Apolipoprotein L, Apo-L, ApoL, Apolipoprotein L-I, ApoL-I, APOL1, APOL

Format

0.5 mg IgG/ml in Tris saline (20mM Tris pH7.3, 150mM NaCl), 0.02% sodium azide, with 0.5% bovine serum albumin

Storage

Maintain refrigerated at 2-8°C for up to 6 months. For long term storage store at -20°C in small aliquots to prevent freeze-thaw cycles.

Precautions

Goat Anti-APOL1 Antibody is for research use only and not for use in diagnostic or therapeutic procedures.

Goat Anti-APOL1 Antibody - Protein Information**Name** APOL1**Synonyms** APOL**Function**

May play a role in lipid exchange and transport throughout the body. May participate in reverse cholesterol transport from peripheral cells to the liver.

Cellular Location

Secreted.

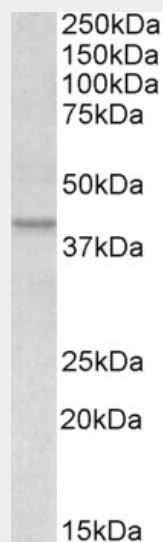
Tissue Location

Plasma. Found on APOA-I-containing high density lipoprotein (HDL3). Expressed in pancreas, lung, prostate, liver, placenta and spleen

Goat Anti-APOL1 Antibody - Protocols

Provided below are standard protocols that you may find useful for product applications.

- [Western Blot](#)
- [Blocking Peptides](#)
- [Dot Blot](#)
- [Immunohistochemistry](#)
- [Immunofluorescence](#)
- [Immunoprecipitation](#)
- [Flow Cytometry](#)
- [Cell Culture](#)

Goat Anti-APOL1 Antibody - Images

AF1083a (0.1 µg/ml) staining of Human Placenta lysate (35 µg protein in RIPA buffer). Primary incubation was 1 hour. Detected by chemiluminescence.

Goat Anti-APOL1 Antibody - Background

This gene encodes a secreted high density lipoprotein which binds to apolipoprotein A-I. Apolipoprotein A-I is a relatively abundant plasma protein and is the major apoprotein of HDL. It is involved in the formation of most cholesteryl esters in plasma and also promotes efflux of cholesterol from cells. This apolipoprotein L family member may play a role in lipid exchange and transport throughout the body, as well as in reverse cholesterol transport from peripheral cells to the liver. Several different transcript variants encoding different isoforms have been found for this gene.

Goat Anti-APOL1 Antibody - References

A risk allele for focal segmental glomerulosclerosis in African Americans is located within a region containing APOL1 and MYH9. Genovese G, et al. *Kidney Int*, 2010 Oct. PMID 20668430.
Association of trypanolytic ApoL1 variants with kidney disease in African Americans. Genovese G, et

al. Science, 2010 Aug 13. PMID 20647424.

Missense mutations in the APOL1 gene are highly associated with end stage kidney disease risk previously attributed to the MYH9 gene. Tzur S, et al. Hum Genet, 2010 Sep. PMID 20635188.

Variation at the NFATC2 Locus Increases the Risk of Thiazolinedinedione-Induced Edema in the Diabetes REduction Assessment with ramipril and rosiglitazone Medication (DREAM) Study. Bailey SD, et al. Diabetes Care, 2010 Jul 13. PMID 20628086.

Physiogenomic analysis of statin-treated patients: domain-specific counter effects within the ACACB gene on low-density lipoprotein cholesterol? Ruaño G, et al. Pharmacogenomics, 2010 Jul. PMID 20602615.