

**Goat Anti-Apolipoprotein L4 Antibody**  
**Peptide-affinity purified goat antibody**  
**Catalog # AF1088a****Specification**

---

**Goat Anti-Apolipoprotein L4 Antibody - Product Information**

Application	WB
Primary Accession	<a href="#">Q9BPW4</a>
Other Accession	<a href="#">NP_663693</a> , <a href="#">80832</a>
Reactivity	Human
Host	Goat
Clonality	Polyclonal
Concentration	100ug/200ul
Isotype	IgG
Calculated MW	39164

**Goat Anti-Apolipoprotein L4 Antibody - Additional Information****Gene ID** 80832**Other Names**

Apolipoprotein L4, Apolipoprotein L-IV, ApoL-IV, APOL4

**Format**

0.5 mg IgG/ml in Tris saline (20mM Tris pH7.3, 150mM NaCl), 0.02% sodium azide, with 0.5% bovine serum albumin

**Storage**

Maintain refrigerated at 2-8°C for up to 6 months. For long term storage store at -20°C in small aliquots to prevent freeze-thaw cycles.

**Precautions**

Goat Anti-Apolipoprotein L4 Antibody is for research use only and not for use in diagnostic or therapeutic procedures.

**Goat Anti-Apolipoprotein L4 Antibody - Protein Information****Name** APOL4**Function**

May play a role in lipid exchange and transport throughout the body. May participate in reverse cholesterol transport from peripheral cells to the liver (By similarity).

**Cellular Location**

Secreted.

**Tissue Location**

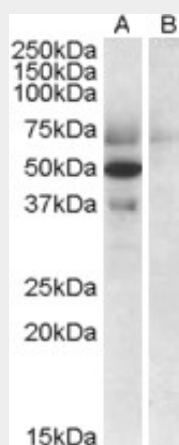
Widely expressed; the highest levels are in spinal cord, placenta, adrenal gland; also detected in spleen, bone marrow, uterus, trachea, mammary gland and testis; levels are low in brain, heart and pancreas

### Goat Anti-Apolipoprotein L4 Antibody - Protocols

Provided below are standard protocols that you may find useful for product applications.

- [Western Blot](#)
- [Blocking Peptides](#)
- [Dot Blot](#)
- [Immunohistochemistry](#)
- [Immunofluorescence](#)
- [Immunoprecipitation](#)
- [Flow Cytometry](#)
- [Cell Culture](#)

### Goat Anti-Apolipoprotein L4 Antibody - Images



AF1088a (0.5 µg/ml) staining of Human Placenta lysate (35 µg protein in RIPA buffer) with (B) and without (A) blocking with the immunising peptide. Primary incubation was 1 hour. Detected by chemiluminescence.

### Goat Anti-Apolipoprotein L4 Antibody - Background

The protein encoded by this gene is a member of the apolipoprotein L family and may play a role in lipid exchange and transport throughout the body, as well as in reverse cholesterol transport from peripheral cells to the liver. Two transcript variants encoding two different isoforms have been found for this gene. Only one of the isoforms appears to be a secreted protein.

### Goat Anti-Apolipoprotein L4 Antibody - References

Association of SNPs and haplotypes in APOL1, 2 and 4 with schizophrenia. Takahashi S, et al. Schizophr Res, 2008 Sep. PMID 18632255.

Investigation of the apolipoprotein-L (APOL) gene family and schizophrenia using a novel DNA pooling strategy for public database SNPs. McGhee KA, et al. Schizophr Res, 2005 Jul 15. PMID 15949655.

A genome annotation-driven approach to cloning the human ORFeome. Collins JE, et al. Genome Biol, 2004. PMID 15461802.

Generation and initial analysis of more than 15,000 full-length human and mouse cDNA sequences.

Strausberg RL, et al. Proc Natl Acad Sci U S A, 2002 Dec 24. PMID 12477932.

The apolipoprotein L gene cluster has emerged recently in evolution and is expressed in human vascular tissue. Monajemi H, et al. Genomics, 2002 Apr. PMID 11944986.