

**Goat Anti-ARL4A Antibody**  
**Peptide-affinity purified goat antibody**  
**Catalog # AF1102a****Specification**

---

**Goat Anti-ARL4A Antibody - Product Information**

Application	<b>WB</b>
Primary Accession	<a href="#">P40617</a>
Other Accession	<a href="#">NP_001032241.1</a> , <a href="#">NP_005729.1</a> , <a href="#">P_997625.1</a> , <a href="#">10124</a> , <a href="#">11861 (mouse)</a>
Reactivity	<b>Human</b>
Predicted	<b>Mouse, Rat, Pig</b>
Host	<b>Goat</b>
Clonality	<b>Polyclonal</b>
Concentration	<b>100ug/200ul</b>
Isotype	<b>IgG</b>
Calculated MW	<b>22615</b>

**Goat Anti-ARL4A Antibody - Additional Information****Gene ID** 10124**Other Names**

ADP-ribosylation factor-like protein 4A, ARL4A, ARL4

**Format**

0.5 mg IgG/ml in Tris saline (20mM Tris pH7.3, 150mM NaCl), 0.02% sodium azide, with 0.5% bovine serum albumin

**Storage**

Maintain refrigerated at 2-8°C for up to 6 months. For long term storage store at -20°C in small aliquots to prevent freeze-thaw cycles.

**Precautions**

Goat Anti-ARL4A Antibody is for research use only and not for use in diagnostic or therapeutic procedures.

**Goat Anti-ARL4A Antibody - Protein Information****Name** ARL4A**Synonyms** ARL4**Function**

Small GTP-binding protein which cycles between an inactive GDP-bound and an active GTP-bound form, and the rate of cycling is regulated by guanine nucleotide exchange factors (GEF) and GTPase-activating proteins (GAP). GTP-binding protein that does not act as an allosteric activator

of the cholera toxin catalytic subunit. Recruits CYTH1, CYTH2, CYTH3 and CYTH4 to the plasma membrane in GDP-bound form.

#### Cellular Location

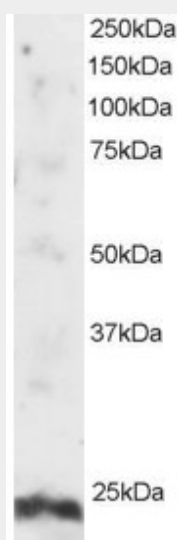
Cell membrane. Cytoplasm. Nucleus, nucleolus. Note=Localization in the nucleolus is dependent by nucleotide binding

### Goat Anti-ARL4A Antibody - Protocols

Provided below are standard protocols that you may find useful for product applications.

- [Western Blot](#)
- [Blocking Peptides](#)
- [Dot Blot](#)
- [Immunohistochemistry](#)
- [Immunofluorescence](#)
- [Immunoprecipitation](#)
- [Flow Cytometry](#)
- [Cell Culture](#)

### Goat Anti-ARL4A Antibody - Images



AF1102a staining (2 µg/ml) of Human Testis lysate (RIPA buffer, 30 µg total protein per lane). Primary incubated for 1 hour. Detected by western blot using chemiluminescence.

### Goat Anti-ARL4A Antibody - Background

ADP-ribosylation factor-like 4A is a member of the ADP-ribosylation factor family of GTP-binding proteins. ARL4A is similar to ARL4C and ARL4D and each has a nuclear localization signal and an unusually high guanine nucleotide exchange rate. ARL4A is located in both the nuclear and extranuclear cell compartments. Multiple transcript variants encoding the same protein have been found for this gene.

### Goat Anti-ARL4A Antibody - References

Increased expression of the glioma-associated antigen ARF4L after loss of the tumor suppressor PTEN. Laboratory investigation. Chi JH, et al. J Neurosurg, 2008 Feb. PMID 18240926.

The Arl4 family of small G proteins can recruit the cytohesin Arf6 exchange factors to the plasma membrane. Hofmann I, et al. Curr Biol, 2007 Apr 17. PMID 17398095.

The status, quality, and expansion of the NIH full-length cDNA project: the Mammalian Gene Collection (MGC). Gerhard DS, et al. Genome Res, 2004 Oct. PMID 15489334.

Human chromosome 7: DNA sequence and biology. Scherer SW, et al. Science, 2003 May 2. PMID 12690205.

Generation and initial analysis of more than 15,000 full-length human and mouse cDNA sequences. Strausberg RL, et al. Proc Natl Acad Sci U S A, 2002 Dec 24. PMID 12477932.