

Goat Anti-BPOZ / ABTB1 Antibody
Peptide-affinity purified goat antibody
Catalog # AF1165a**Specification**

Goat Anti-BPOZ / ABTB1 Antibody - Product Information

Application	IHC, WB
Primary Accession	Q969K4
Other Accession	NP_742025 , 80325 , 80283 (mouse)
Reactivity	Human
Predicted	Mouse, Rat, Dog
Host	Goat
Clonality	Polyclonal
Concentration	100ug/200ul
Isotype	IgG
Calculated MW	53979

Goat Anti-BPOZ / ABTB1 Antibody - Additional Information**Gene ID** 80325**Other Names**

Ankyrin repeat and BTB/POZ domain-containing protein 1, Elongation factor 1A-binding protein, ABTB1 (HGNC:18275)

Format

0.5 mg IgG/ml in Tris saline (20mM Tris pH7.3, 150mM NaCl), 0.02% sodium azide, with 0.5% bovine serum albumin

Storage

Maintain refrigerated at 2-8°C for up to 6 months. For long term storage store at -20°C in small aliquots to prevent freeze-thaw cycles.

Precautions

Goat Anti-BPOZ / ABTB1 Antibody is for research use only and not for use in diagnostic or therapeutic procedures.

Goat Anti-BPOZ / ABTB1 Antibody - Protein Information**Name** ABTB1 ([HGNC:18275](#))**Function**

May act as a mediator of the PTEN growth-suppressive signaling pathway. May play a role in developmental processes.

Cellular Location

Cytoplasm.

Tissue Location

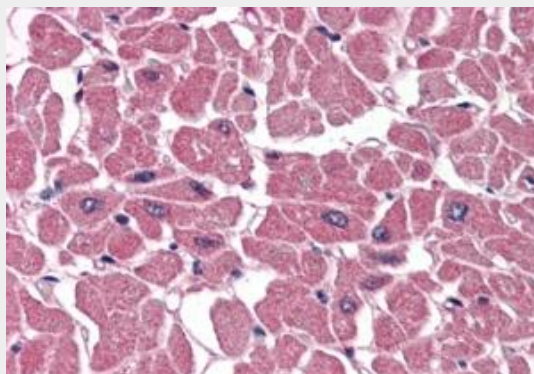
Ubiquitously expressed in all fetal tissues examined including heart, brain, liver, and kidney. Also expressed at lower levels in both adult heart and hypertrophic heart

Goat Anti-BPOZ / ABTB1 Antibody - Protocols

Provided below are standard protocols that you may find useful for product applications.

- [Western Blot](#)
- [Blocking Peptides](#)
- [Dot Blot](#)
- [Immunohistochemistry](#)
- [Immunofluorescence](#)
- [Immunoprecipitation](#)
- [Flow Cytometry](#)
- [Cell Culture](#)

Goat Anti-BPOZ / ABTB1 Antibody - Images

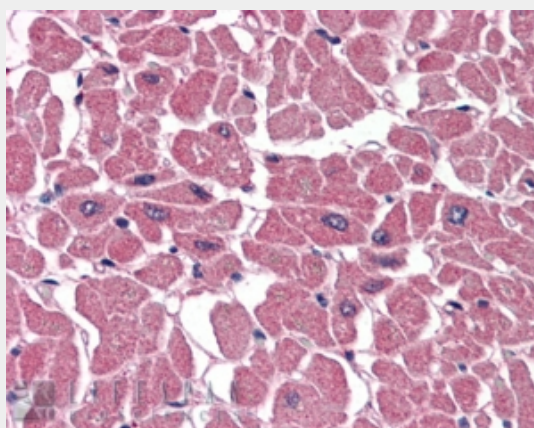


AF1165a (3.8 µg/ml) staining of paraffin embedded Human Heart. Steamed antigen retrieval with citrate buffer pH 6, AP-staining.

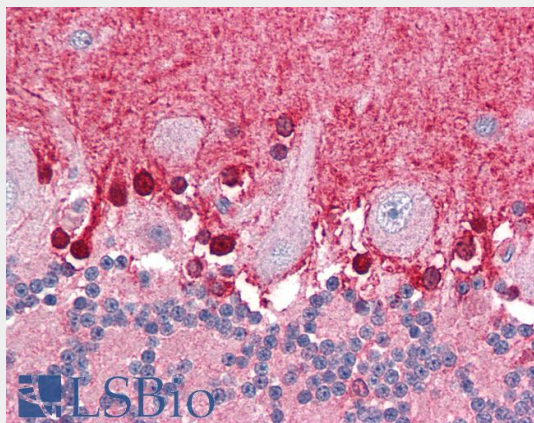


EB05200 staining (1µg/ml) of Human Heart lysate (RIPA buffer, 35µg total protein per lane).

Detected by chemiluminescence.



EB05200 (3.75µg/ml) staining of paraffin embedded Human Heart. Steamed antigen retrieval with citrate buffer pH 6, AP-staining.



EB05200 (3.75µg/ml) staining of paraffin embedded Human Cerebellum. Steamed antigen retrieval with citrate buffer pH 6, AP-staining.

Goat Anti-BPOZ / ABTB1 Antibody - Background

This gene encodes a protein with an ankyrin repeat region and two BTB/POZ domains, which are thought to be involved in protein-protein interactions. Expression of this gene is activated by the phosphatase and tensin homolog, a tumor suppressor. Alternate splicing results in three transcript variants.

Goat Anti-BPOZ / ABTB1 Antibody - References

BPOZ-2 directly binds to eEF1A1 to promote eEF1A1 ubiquitylation and degradation and prevent translation. Koiwai K, et al. *Genes Cells*, 2008 Jun. PMID 18459963.
Bood POZ containing gene type 2 is a human counterpart of yeast Btb3p and promotes the degradation of terminal deoxynucleotidyltransferase. Maezawa S, et al. *Genes Cells*, 2008 May. PMID 18429817.
Large-scale cDNA transfection screening for genes related to cancer development and progression. Wan D, et al. *Proc Natl Acad Sci U S A*, 2004 Nov 2. PMID 15498874.
The status, quality, and expansion of the NIH full-length cDNA project: the Mammalian Gene Collection (MGC). Gerhard DS, et al. *Genome Res*, 2004 Oct. PMID 15489334.
Functional proteomics mapping of a human signaling pathway. Colland F, et al. *Genome Res*, 2004 Jul. PMID 15231748.